

# Fittings, Finishes and Appliances

## 裝置、裝修物料及設備

1. Exterior finishes	
Item	Description
a) External wall	External wall of tower Curtain Wall, glass claddings, aluminum claddings and ceramic tiles at tower façade.  External wall of podium Curtain wall, glass claddings, metal claddings, natural stone claddings, artificial granite and ceramic tiles at podium façade.
b) Window	Windows in Living/Dining Rooms, Bedrooms, Study Rooms, Kitchens, Stores and Bathrooms are finished with fluorocarbon coated aluminum frame and with low-e coating Insulated Glazing Unit (IGU).  Bathroom window glazing are finished with featured laminated translucent glass in the inner glazing of low-e coating IGU for flats on 32/F and below.  Bathroom window glazing are finished with featured laminated see through glass in the inner glazing of low-e coating IGU for flats on 33/F and above.
c) Bay window	Not applicable
d) Planter	All planters finished with natural stones, glass claddings, artificial granite and tiles.
e) Verandah or balcony	Each of the Balconies is wholly covered. (Except for balconies at Flat A of 6/F and Flat A of 16/F, the balconies are partially covered.)  Balcony fitted with metal framed laminated glass balustrade. Floor finished with natural stone. Wall finished with aluminium claddings. Light fittings are provided.  There is no Verandah.
f) Drying facilities for clothing	Not applicable

2. Interior finishes	
Item	Description
a) Lobby	Residential main entrance lobby on ground floor <ul style="list-style-type: none"> <li>- Curtain wall at lobby façade.</li> <li>- Internal floor finished with natural stones.</li> <li>- Internal walls decorated by natural stones, stainless steel, glass, veneer, crystals and synthetic leather.</li> <li>- Plaster board false ceiling decorated with custom designed light fittings and air-conditioning system to be installed.</li> </ul> Residential entrance lobby on third floor <ul style="list-style-type: none"> <li>- Internal floor finished with natural stones.</li> <li>- Internal walls decorated by natural stones, stainless steel, crystals, and synthetic leather.</li> <li>- Plaster board false ceiling decorated with light fittings and air-conditioning system to be installed.</li> </ul> Residential lift lobby <ul style="list-style-type: none"> <li>- Internal floor finished with natural stones.</li> <li>- Internal walls decorated by natural stones, stainless steel, veneer, mirror, crystals and synthetic leather.</li> <li>- Plaster board false ceiling decorated with light fittings.</li> </ul>
b) Internal wall and ceiling	<ul style="list-style-type: none"> <li>- Internal walls and ceilings of Living/Dining Rooms and Bedrooms (some areas are equipped with plaster board false ceiling or bulkhead) are finished with emulsion paint where exposed.</li> <li>- The TV wall of Living Rooms of Flat A of 6/F; Flat A and D of 7/F; Flat A, C, D and F of 8/F - 15/F; Flat A, B, C and E of 16/F; Flat A, C, D and F of 17/F - 19/F; Flat A, C and E of 20/F - 32/F; Flat B and C of 33/F - 38/F; Flat B of 39/F and Flat A and B of 41/F is decorated with synthetic leather, clear glass panels and veneer with metal frame.</li> <li>- The TV wall of Living Rooms of Flat B of 6/F; Flat A and D of 33/F - 38/F; Flat A and C of 39/F; Flat C of 41/F and Flat A of 42/F is decorated with synthetic leather, featured laminated glass and veneer with metal frame.</li> </ul>

	<ul style="list-style-type: none"> <li>- The TV wall of Living Rooms of Flat C of 6/F; Flat B, C and E of 7/F; Flat B, E and G of 8/F - 15/F; Flat D of 16/F; Flat B and E of 17/F - 19/F and Flat B and D of 20/F - 32/F is decorated with synthetic leather, clear glass panels, mirror and veneer with metal frame.</li> <li>- The wall of Living/Dining Room of Flat B of 42/F is decorated with synthetic leather, featured laminated glass and veneer with metal frame.</li> </ul>
c) Internal floor	For 1-bedroom flats, 2-bedroom flats (except for Flat C of 6/F), 2-bedroom flats with Study Room or Store, and 3-bedroom flats without Store (except for Flat B of 41/F). <ul style="list-style-type: none"> <li>- Living/Dining Rooms are finished with reconstituted stone flooring and skirting.</li> <li>- Master Bedrooms and Bedrooms are finished with engineering timber flooring and skirting. Floor border along the glass doors to Balconies, Utility Platforms and/or Flat Roofs partially finished with reconstituted stone.</li> </ul> For 3-bedroom flats with Store or above, Flat C of 6/F, and Flat B of 41/F <ul style="list-style-type: none"> <li>- Living/Dining Rooms are finished with natural stone flooring and skirting.</li> <li>- Master Bedrooms and Bedrooms are finished with engineering timber flooring and skirting. Floor border along the glass doors to Balconies, Utility Platforms and/or Flat Roofs partially finished with natural stone.</li> </ul>
d) Bathroom	<ul style="list-style-type: none"> <li>- Natural stone flooring for the floor finishes.</li> <li>- Natural stone and featured laminated glass panels for wall finishes up to false ceiling. Wall behind vanity counters and cabinets finished with ceramic tiles.</li> <li>- Plaster board and stainless steel false ceiling fitted with light fittings.</li> </ul>

e) Kitchen	<ul style="list-style-type: none"> <li>- Natural stone flooring for the floor finishes.</li> <li>- Natural stone, stainless steel panels and glass panels for wall finishes up to false ceiling (for Flat A and C of 6/F; all Flats at 7/F to 19/F; Flat B, C and D of 20/F - 32/F; Flat B and C of 33/F - 38/F; Flat B of 39/F and Flat B of 41/F). Wall behind kitchen cabinets and refrigerator finished with ceramic tiles.</li> <li>- Natural stone and stainless steel panels for wall finishes up to false ceiling (for Flat B of 6/F; Flat A and E of 20/F - 32/F; Flat A and D of 33/F - 38/F; Flat A and C of 39/F; Flat A and C of 41/F and Flat A and B of 42/F). Wall behind kitchen cabinets and refrigerator finished with ceramic tiles.</li> <li>- The cooking bench is finished with reconstituted stone. The cooking bench at Living/Dining Rooms of Flat A and D of 33/F - 38/F; Flat A and C of 39/F and 41/F; Flat A and B of 42/F is finished with natural stone.</li> <li>- Plaster board and aluminum false ceiling fitted with light fittings.</li> </ul>
------------	---

### 3. Interior fittings

Item	Description
a) Doors	<p>Main entrance door</p> <ul style="list-style-type: none"> <li>- Veneered solid core timber entrance door with timber door frame and decorative architraves, fitted with “Samsung” digital lockset (for all 1-bedroom flats, 2-bedroom flats and 2-bedroom flats with Study Room or Store, except for all flats at 6/F) or “Baldwin” mechanical lockset (for all 3-bedroom flats or above including all flats at 6/F), concealed closers and magic eye viewer.</li> </ul> <p>Bedroom door</p> <ul style="list-style-type: none"> <li>- Veneered timber door with timber door frame and decorative architrave fitted with lockset.</li> </ul> <p>Kitchen door</p> <ul style="list-style-type: none"> <li>- Glass door (Fire rated glass door with metal frame and door closer for Flat A and Flat E of 20/F - 32/F)</li> </ul>

	<p>Bathroom door</p> <ul style="list-style-type: none"> <li>- Veneered timber door with timber door frame and decorative architraves, fitted with locksets. Some Bathroom doors (for Bathroom without windows) are equipped with timber louver.</li> <li>- Bathroom at 1-bedroom flats is provided with an additional timber sliding door connecting to Bedroom.</li> </ul> <p>Study Room door</p> <ul style="list-style-type: none"> <li>- Glass door fitted with lockset.</li> </ul> <p>Door for Store adjacent to Living Room or inside Master Bedroom</p> <ul style="list-style-type: none"> <li>- Glass door fitted with lockset. (For Flat C of 41/F, veneered timber door with timber door frame and decorative architrave fitted with lockset.)</li> </ul> <p>Door for Store inside Kitchen</p> <ul style="list-style-type: none"> <li>- Timber door finished with mirror facing the Kitchen and plastic laminate facing the store interior with metal door frame, fitted with locksets. Lavatory door inside the store is glass sliding door.</li> </ul> <p>Door for Balcony/Utility Platform/Flat Roof</p> <ul style="list-style-type: none"> <li>- Aluminum framed glass (IGU) sliding doors, slide folding doors and swing doors. For details, please refer to the Floor Plans of Residential Properties in the Development.</li> </ul>
--	---

b) Bathroom	<ul style="list-style-type: none"> <li>- Vanity counters with natural stone countertop.</li> <li>- Stainless steel finished wooden mirror cabinet.</li> <li>- Vitreous China water closet.</li> <li>- Vitreous China wash basin with chrome plated basin mixer.</li> <li>- Stainless steel shower panel (except for Master Bathroom of Flat A of 6/F and 16/F).</li> <li>- For Master Bathroom, enamelled cast-iron 1500mmL x 700mmW x 418mmH bathtub with chrome plated bathtub mixer (except for Master Bathroom of Flat A of 6/F and 16/F, provided with enamelled cast-iron 1400mmL x 700mmW x 435mmH bathtub with chrome plated bathtub and shower mixer, shower set and shower head).</li> <li>- Chrome plated toilet paper holder, chrome plated towel bar, stainless steel towel bar and magazine rack of synthetic leather and stainless steel at Bathroom door.</li> </ul>
-------------	--

	<ul style="list-style-type: none"> <li>- 1 no. of TV is provided in all Bathrooms. Bathroom with both shower and bathtub to be provided with a second TV.</li> <li>- USB point, HDMI point and composite video connector are provided to all Bathrooms inside mirror cabinet.</li> <li>- Bathroom dehumidifier, electric water heater and mechanical ventilation are provided.</li> <li>- Copper pipes for hot and cold water supply.</li> <li>- Manual-controlled blinds are provided to all windows.</li> </ul>
c) Kitchen	<ul style="list-style-type: none"> <li>- Kitchen wooden cabinet fitted with glass and wood decorative laminate door panel.</li> <li>- Stainless steel sink and chrome plated hot and cold water sink mixer.</li> <li>- 1 no. of TV is provided in all 3-bedroom flats or above.</li> <li>- Electric water heater and mechanical ventilation are provided.</li> <li>- “Panasonic” Split-type (Duct-type system) air-conditioner (cooling and heating) is installed in the Kitchen for all 3-bedroom flats or above.</li> <li>- Fire service installations and equipment: Sprinkler head, smoke detector and remote indicator for fire signal are provided.</li> <li>- Copper pipes for hot and cold water supply.</li> <li>- Kitchens of Flat A and C of 6/F; Flat A, B, C, D and E of 7/F; Flat A, B, C, D, E, F and G of 8/F - 15/F; Flat A, B, C, D and E of 16/F; Flat A, B, C, D, E and F of 17/F - 19/F; Flat B, C and D of 20/F - 32/F; Flat B and C of 33/F - 38/F; Flat B of 39/F and Flat B of 41/F are provided with manual-controlled blinds.</li> </ul>

# Fittings, Finishes and Appliances

## 裝置、裝修物料及設備

Item	Description
d) Bedroom	One track electric-controlled curtains are provided to the windows and doors connecting to the Balconies, Utility Platforms and/or Flat Roofs.
e) Telephone	Telephone point is installed in all Living/Dining Rooms, Bedrooms, Study Rooms and Stores adjacent to Living Rooms and Bedrooms.  For the location and number of telephone points, please refer to the 'Schedule of mechanical and electrical provisions of units' and 'Mechanical and electrical provisions plan'.
f) Aerials	Communal TV/FM point for CABD system and local HD TV/FM radio programme are installed in all Living/Dining Rooms, Bedrooms, Study Rooms and Stores adjacent to Living Rooms and Bedrooms.  For the location and number of TV/FM points, please refer to the 'Schedule of mechanical and electrical provisions of units' and 'Mechanical and electrical provisions plan'.
g) Electrical installations	Concealed conduit wiring with lighting and power points (Three phase electricity supply with miniature circuit breakers distribution boards are provided).  For the location and number of lighting and power points, please refer to the 'Schedule of mechanical and electrical provisions of units' and 'Mechanical and electrical provisions plan'.
h) Gas supply	Town gas supply pipes are provided and connected to gas cooking hob at Kitchen.

i) Washing machine connection point	2-in-1 washer dryer machine connection point at Kitchen. (For Flat A and D of 33/F - 38/F; Flat A and C of 39/F and 41/F; Flat A and B of 42/F, the connection point is located at Living/ Dining Room).
j) Water supply	Copper pipes for hot and cold water supply. Copper pipes are concealed in walls or enclosed in false ceilings, bulkheads or cabinets. Hot water supply is available in Kitchen and Bathroom.
<b>4. Miscellaneous</b>	
Item	Description
a) Lifts	Shuttle passenger lift served by 3 numbers of air-conditioned "Mitsubishi" (Model No.: Elenessa) shuttle passenger lifts to the following floors: G/F and 3/F. Two of them can also reach 2/F clubhouse.  Residential lift served by 4 numbers of air-conditioned "Mitsubishi" (Model No.: Nexway) passenger lifts to the following floors: from 3/F to 42/F. Two of them can also reach the Roof.
b) Letter box	Letter box finished with stainless steel for each flat is provided at tower's lift lobby at podium level.
c) Refuse collection	Refuge storage and material recovery room is provided at each residential floor. Refuse will be collected and centrally handled at the Refuse Room at G/F.
d) Water meter, electricity meter and gas meter	Separate electric meter and water meter for all individual flats are installed at common meter rooms. Town Gas meter is provided in individual flat.

### 5. Security facilities

CCTV cameras are provided at residential main entrance lobby on ground floor, residential entrance lobby on third floor and lift cars monitored at the caretaker office. Color video phone is provided at each flat. Visitor intercom panel and smart card reader are provided at the Development.

The Vendor undertake that if lifts or appliances of the specified brand name or model number are not installed in the Development, lifts or appliances of comparable quality will be installed.

## 6. Appliances Schedule

For Living/Dining Room/Kitchen/Lavatory inside Kitchen Store  
Appliance to be provided and/or installed in each unit as follows:

Floor	6/F	7/F	8/F - 15/F	16/F	17/F - 19/F	20/F - 32/F
Unit	C	A, B, C, D & E	A, B, C, D, E, F & G	B, C, D & E	A, B, C, D, E & F	A, B, C, D & E

Appliance	Brand Name	Model No.
TV at Living/Dining Room	LG	49UF8500
Gas Cooking Hob	Siemens	ER326AB92X
Induction Hob	Siemens	EH375ME11E
Cooker Hood	Gaggenau	AH900-161
Refrigerator	Siemens	KI28NP60
Microwave Oven	Gaggenau	BMP224-110 or BMP225-110
Wine Cellar	Gorenje	XWC150X
2-in-1 Washer Dryer Machine	Siemens	WK14D540HK
Kitchen Exhaust Fan	Panasonic	FV-04NU1H
Kitchen Electric Water Heater	Stiebel Eltron	DHM 6

Floor	6/F	16/F
Unit	A & B	A

Appliance	Brand Name	Model No.
TV at Living/Dining Room	LG	55UF8500
TV at Kitchen	Magic TV	MTK101
Gas Cooking Hob	Gaggenau	VG231-334SG and VG232-334SG
Cooker Hood	Gaggenau	AH900-161
Refrigerator	Miele	KFN9753iD
Combi Steam Oven	Gaggenau	BSP250-110 or BSP251-110
Microwave Oven	Gaggenau	BMP224-110 or BMP225-110
Wine Cellar	Gorenje	XWC340X
2-in-1 Washer Dryer Machine	Miele	WT2789 I WPM
Kitchen Exhaust Fan	Panasonic	FV-04NU1H
Lavatory inside Kitchen Store Exhaust Fan	Panasonic	FV-04NU1H
Kitchen Electric Water Heater	Stiebel Eltron	DHM 6
Lavatory inside Kitchen Store Electric Water Heater	Stiebel Eltron	DHE 21 SLi

The Vendor undertake that if lifts or appliances of the specified brand name or model number are not installed in the Development, lifts or appliances of comparable quality will be installed.

# Fittings, Finishes and Appliances

## 裝置、裝修物料及設備

### 6. Appliances Schedule

For Living/Dining Room/Kitchen/Lavatory inside Kitchen Store  
Appliance to be provided and/or installed in each unit as follows:

Floor	33/F - 38/F	39/F	41/F
Unit	B & C	B	B

Appliance	Brand Name	Model No.
TV at Living/Dining Room	LG	55UF8500
TV at Kitchen	Magic TV	MTK101
Gas Cooking Hob	Gaggenau	VG231-334SG and VG232-334SG
Cooker Hood	Gaggenau	AH900-161
Refrigerator	Miele	KFN9753iD
Combi Steam Oven	Gaggenau	BSP250-110 or BSP251-110
Microwave Oven	Gaggenau	BMP224-110 or BMP225-110
Wine Cellar	Gorenje	XWC340X
2-in-1 Washer Dryer Machine	Miele	WT2789 I WPM
Kitchen Exhaust Fan	Panasonic	FV-04NU1H
Kitchen Electric Water Heater	Stiebel Eltron	DHM 6

Floor	33/F - 38/F	39/F	41/F	42/F
Unit	D	C	C	B

Appliance	Brand Name	Model No.
TV at Living/Dining Room	LG	55UF8500
TV at Kitchen	Magic TV	MTK101
Gas Cooking Hob	Gaggenau	VG231-334SG and VG232-334SG
Induction Hob	Gaggenau	VI230-134
Cooker Hood (Kitchen)	Gaggenau	AH900-161
Cooker Hood (Living/Dining Room)	Gaggenau	AW230-170
Refrigerator	Miele	KFN9753iD
Combi Steam Oven	Gaggenau	BSP250-110 or BSP251-110
Microwave Oven	Gaggenau	BMP224-110 or BMP225-110
Coffee Maker	Gaggenau	CMP250-110
Wine Cellar	Gorenje	XWC340X
2-in-1 Washer Dryer Machine	Miele	WT2789 I WPM
Kitchen Exhaust Fan	Panasonic	FV-04NU1H
Lavatory inside Kitchen Store Exhaust Fan	Panasonic	FV-04NU1H
Kitchen Electric Water Heater	Stiebel Eltron	DHM 6
Lavatory inside Kitchen Store Electric Water Heater	Stiebel Eltron	DHE 21 SLi

The Vendor undertake that if lifts or appliances of the specified brand name or model number are not installed in the Development, lifts or appliances of comparable quality will be installed.

## 6. Appliances Schedule

For Living/Dining Room/Kitchen/Lavatory inside Kitchen Store  
Appliance to be provided and/or installed in each unit as follows:

Floor	33/F - 38/F	39/F	41/F	42/F
Unit	A	A	A	A

Appliance	Brand Name	Model No.
TV at Living/Dining Room	LG	55UF8500
TV at Kitchen	Magic TV	MTK101
Gas Cooking Hob	Gaggenau	VG231-334SG and VG232-334SG
Induction Hob	Gaggenau	VI230-134
Cooker Hood (Kitchen)	Gaggenau	AH900-161
Cooker Hood (Living/Dining Room)	Gaggenau	AW230-170
Refrigerator	Miele	KFN9753iD
Combi Steam Oven	Gaggenau	BSP250-110 or BSP251-110
Microwave Oven	Gaggenau	BMP224-110 or BMP225-110
Coffee Maker	Gaggenau	CMP250-110
Wine Cellar	Gorenje	XWC340X
2-in-1 Washer Dryer Machine	Miele	WT2789 I WPM
Kitchen Exhaust Fan	Panasonic	FV-04NU1H
Lavatory inside Kitchen Store Exhaust Fan	Panasonic	FV-15WH308
Kitchen Electric Water Heater	Stiebel Eltron	DHM 6
Lavatory inside Kitchen Store Electric Water Heater	Stiebel Eltron	DHE 21 SLi

The Vendor undertake that if lifts or appliances of the specified brand name or model number are not installed in the Development, lifts or appliances of comparable quality will be installed.

# Fittings, Finishes and Appliances

## 裝置、裝修物料及設備

### 6. Appliances Schedule

For Bathroom  
Appliance to be provided and/or installed in each unit as follows:

Floor	6/F	33/F - 38/F	39/F	41/F	42/F
Unit	B	A, B, C & D	A, B & C	A, B & C	A & B

Appliance	Brand Name	Model No.
TV at Mirror Cabinet	Magic TV	MTB101
TV at Bathtub (For Master Bathroom)	Magic TV	MTB190
Dehumidifier	Cold Magic	CDH-22R2
Electric Water Heater	Stiebel Eltron	DHE21SLi and DHE27SLi
Exhaust Fan	Panasonic	FV-04NU1H

Floor	6/F	16/F
Unit	A	A

Appliance	Brand Name	Model No.
TV at Mirror Cabinet	Magic TV	MTB101
Dehumidifier	Cold Magic	CDH-22R2
Electric Water Heater	Stiebel Eltron	DHE21SLi and DHE27SLi
Exhaust Fan	Panasonic	FV-04NU1H

Floor	6/F	7/F	8/F - 15/F	16/F	17/F - 19/F	20/F - 32/F
Unit	C	A, B, C, D & E	A, B, C, D, E, F & G	B, C, D & E	A, B, C, D, E & F	A, B, C, D & E

Appliance	Brand Name	Model No.
TV at Mirror Cabinet	Magic TV	MTB101
Dehumidifier	Cold Magic	CDH-22R2
Electric Water Heater	Stiebel Eltron	DHE21SLi
Exhaust Fan	Panasonic	FV-04NU1H

The Vendor undertake that if lifts or appliances of the specified brand name or model number are not installed in the Development, lifts or appliances of comparable quality will be installed.

## 6. Appliances Schedule

For Living/Dining Room/Bedroom/Study Room/Store/Kitchen  
Appliance to be provided and/or installed in each unit as follows:

Floor	6/F	7/F	8/F - 15/F	20/F - 32/F
Unit	C	E	G	B, C & D

Appliance	Brand Name	Model No.
Air-Conditioners (Cooling and Heating) for Living/Dining Room/Bedroom/Store	Panasonic	CS-YE9MKA and CU-YE9MKA CS-YE12MKA and CU-YE12MKA CS-YE24MKA and CU-YE24MKA

Floor	7/F	8/F - 15/F	16/F	17/F - 19/F	20/F - 32/F
Unit	A & D	A&F	E	A & F	A & E

Appliance	Brand Name	Model No.
Air-Conditioners (Cooling and Heating) for Living/Dining Room/Bedroom/Study Room	Panasonic	CS-YE9MKA and CU-YE9MKA CS-YE18MKA and CU-YE18MKA CS-YE24MKA and CU-YE24MKA

Floor	7/F	8/F - 15/F	16/F	17/F - 19/F
Unit	B & C	B, C, D&E	B, C & D	B, C, D & E

Appliance	Brand Name	Model No.
Air-Conditioners (Cooling and Heating) for Living/Dining Room/Bedroom	Panasonic	CS-YE12MKA and CU-YE12MKA CS-YE24MKA and CU-YE24MKA

Floor	6/F	16/F
Unit	A	A

Appliance	Brand Name	Model No.
Air-Conditioners (Cooling and Heating) for Living/Dining Room/Bedroom/Store/Kitchen	Panasonic	CS-YE9MKA and CU-YE9MKA CS-YE24MKA and CU-YE24MKA CS-E9JD4H and CU-E9JBH CS-E18JD4H and CU-E18JBH

Floor	6/F
Unit	B

Appliance	Brand Name	Model No.
Air-Conditioners (Cooling and Heating) for Living/Dining Room/Bedroom/Store/Kitchen	Panasonic	CS-YE9MKA and CU-YE9MKA CS-YE12MKA and CU-YE12MKA CS-YE18MKA and CU-YE18MKA CS-E18JD4H and CU-E18JBH CS-E9NKEW and CS-E10KD3EA and CU-3E18LBE

Floor	33/F - 38/F	39/F	41/F
Unit	B & C	B	A, B & C

Appliance	Brand Name	Model No.
Air-Conditioners (Cooling and Heating) for Living/Dining Room/Bedroom/Store/Kitchen	Panasonic	CS-YE9MKA and CU-YE9MKA CS-YE12MKA and CU-YE12MKA CS-E9JD4H and CU-E9JBH CS-E23JD4H and CU-E23JBH

The Vendor undertake that if lifts or appliances of the specified brand name or model number are not installed in the Development, lifts or appliances of comparable quality will be installed.



# Fittings, Finishes and Appliances

## 裝置、裝修物料及設備

### 6. Appliances Schedule

For Living/Dining Room/Bedroom/Study Room/Store/Kitchen  
Appliance to be provided and/or installed in each unit as follows:

Floor	33/F - 38/F	39/F
Unit	A & D	A & C

Appliance	Brand Name	Model No.
Air-Conditioners (Cooling and Heating) for Living/Dining Room/Bedroom/Store/Kitchen	Panasonic	CS-YE9MKA and CU-YE9MKA CS-YE18MKA and CU-YE18MKA CS-E9JD4H and CU-E9JBH CS-E18JD4H and CU-E18JBH

Floor	42/F
Unit	A

Appliance	Brand Name	Model No.
Air-Conditioners (Cooling and Heating) for Living/Dining Room/Bedroom/Store/Kitchen	Panasonic	CS-YE9MKA and CU-YE9MKA CS-YE18MKA and CU-YE18MKA CS-E9JD4H and CU-E9JBH CS-E23JD4H and CU-E23JBH

Floor	42/F
Unit	B

Appliance	Brand Name	Model No.
Air-Conditioners (Cooling and Heating) for Living/Dining Room/Bedroom/Store/Kitchen	Panasonic	CS-YE9MKA and CU-YE9MKA CS-YE18MKA and CU-YE18MKA CS-YE24MKA and CU-YE24MKA CS-E9JD4H and CU-E9JBH

The Vendor undertake that if lifts or appliances of the specified brand name or model number are not installed in the Development, lifts or appliances of comparable quality will be installed.

1. 外部裝修物料	
細項	描述
a) 外牆	大廈外牆 大廈外牆安裝玻璃幕牆，玻璃裝飾板，鋁板及鋪砌瓷磚。  平台外牆 平台外牆安裝玻璃幕牆，玻璃裝飾板，金屬板，天然石材，合成石材及鋪砌瓷磚。
b) 窗	客/飯廳，睡房，書房，廚房，儲物房及浴室內的窗安裝氟化塗層鋁質窗框，並配雙層中空低反射鍍膜玻璃。 32樓及以下的單位浴室窗的玻璃為雙層中空低反射鍍膜玻璃，其內玻璃片選用可透光的裝飾夾膠玻璃。 33樓及以上的單位浴室窗的玻璃為雙層中空低反射鍍膜玻璃，其內玻璃片選用可看通的裝飾夾膠玻璃。
c) 窗台	不適用
d) 花槽	所有花槽鋪砌天然石材，玻璃裝飾板，合成石材及瓷磚。
e) 陽台或露台	每個露台均被完全地覆蓋。(6樓A單位及16樓A單位的露台是部份地被覆蓋) 露台裝有金屬框夾心玻璃欄杆。地台鋪砌天然石材，牆身鋪砌鋁板。設有照明燈飾。 沒有陽台。
f) 乾衣設施	不適用
2. 室內裝修物料	
細項	描述
a) 大堂	地下住宅入口大堂 - 入口大堂外牆為玻璃幕牆。 - 地台鋪砌天然石材。 - 牆身鋪砌天然石材、不銹鋼、玻璃、木皮、水晶及人造皮革。 - 石膏板假天花裝妥燈飾，並設有空調系統。  3樓住宅入口大堂 - 地台鋪砌天然石材。

	<ul style="list-style-type: none"> <li>- 牆身鋪砌天然石材、不銹鋼、水晶及人造皮革。</li> <li>- 石膏板假天花裝妥燈飾，並設有空調系統。</li> </ul> 住宅單位升降機大堂 <ul style="list-style-type: none"> <li>- 地台鋪砌天然石材。</li> <li>- 牆身鋪砌天然石材、不銹鋼、木皮、鏡、水晶及人造皮革。</li> <li>- 石膏板假天花裝妥燈飾。</li> </ul>
b) 內牆及天花板	<ul style="list-style-type: none"> <li>- 客/飯廳及睡房(部份設有石膏板假天花或假陣)的外露牆身及天花均髹乳膠漆。</li> <li>- 6樓A單位；7樓A及D單位；8樓至15樓A、C、D及F單位；16樓A、B、C及E單位；17樓至19樓A、C、D及F單位；20樓至32樓A、C及E單位；33樓至38樓B及C單位；39樓B單位；41樓A及B單位的客廳之電視牆身裝飾為人造皮革、清玻璃、及木皮配金屬框。</li> <li>- 6樓B單位；33樓至38樓A及D單位；39樓A及C單位；41樓C單位及42樓A單位的客廳之電視牆身裝飾為人造皮革、裝飾玻璃、及木皮配金屬框。</li> <li>- 6樓C單位；7樓B、C及E單位；8樓至15樓B、E及G單位；16樓D單位；17樓至19樓B及E單位；20樓至32樓B及D單位的客廳之電視牆身裝飾為人造皮革、清玻璃、鏡、及木皮配金屬框。</li> <li>- 42樓B單位客/飯廳牆身裝飾為人造皮革，裝飾玻璃，及木皮配金屬框。</li> </ul>
c) 內部地板	一房、兩房(6樓C單位除外)、兩房連書房或儲物房及不設儲物房的三房單位(41樓B單位除外) <ul style="list-style-type: none"> <li>- 客/飯廳地板鋪砌合成石材及腳線。</li> <li>- 主人睡房及睡房鋪砌複合木地板及腳線。露台、工作平台及/或平台沿玻璃門之地台圍邊部份鋪砌合成石材。</li> </ul> 三房連儲物房或以上單位、6樓C單位及41樓B單位 <ul style="list-style-type: none"> <li>- 客/飯廳地板鋪砌天然石材及腳線。</li> <li>- 主人睡房及睡房鋪砌複合木地板及腳線。露台、工作平台及/或平台沿玻璃門之地台圍邊部份鋪砌天然石材。</li> </ul>

d) 浴室	<ul style="list-style-type: none"> <li>- 地台鋪砌天然石材。</li> <li>- 牆身鋪砌天然石材及裝飾玻璃至假天花底。櫃背之牆身鋪砌瓷磚。</li> <li>- 石膏板及不銹鋼假天花裝妥照明燈飾。</li> </ul>
e) 廚房	<ul style="list-style-type: none"> <li>- 地台鋪砌天然石材。</li> <li>- 牆身鋪砌天然石材、不銹鋼板及玻璃至假天花底(適用於6樓A及C單位；7樓至19樓所有單位；20樓至32樓B、C及D單位；33樓至38樓B及C單位；39樓B單位及41樓B單位)。廚櫃及雪櫃背之牆身鋪砌瓷磚。</li> <li>- 牆身鋪砌天然石材及不銹鋼板至假天花底。(適用於6樓B單位；20樓至32樓A及E單位；33樓至38樓A及D單位；39樓A及C單位；41樓A及C單位；42樓A及B單位)。廚櫃及雪櫃背之牆身鋪砌瓷磚。</li> <li>- 灶台面以合成石材鋪砌。33樓至38樓A及D單位；39樓及41樓A及C單位；42樓A及B單位的客/飯廳灶台面以天然石材鋪砌。</li> <li>- 石膏板及鋁片假天花裝妥照明燈飾。</li> </ul>
3. 室內裝置	
細項	描述
a) 門	入口大門 <ul style="list-style-type: none"> <li>- 採用實心木門，配木門框及裝飾封口線，並裝妥“Samsung”電子門鎖(適用於所有一房，兩房及兩房連書房或儲物房單位，6樓單位除外)或“BALDWIN”門鎖(適用於所有6樓單位及所有三房或以上單位)，連暗氣鼓及防盜眼。</li> </ul> 睡房門 <ul style="list-style-type: none"> <li>- 木門配木門框及裝飾封口線，並裝妥門鎖。</li> </ul> 廚房門 <ul style="list-style-type: none"> <li>- 玻璃門(20樓至32樓A及E單位設金屬框防火玻璃門配氣鼓)。</li> </ul> 浴室門 <ul style="list-style-type: none"> <li>- 木門配木門框及裝飾封口線，並裝妥門鎖。部分門扇(適用於不設窗口的浴室單位)設有木百葉。</li> <li>- 一房單位的浴室另外裝有木趟門貫通睡房。</li> </ul>

# Fittings, Finishes and Appliances

## 裝置、裝修物料及設備

	<p>書房門</p> <ul style="list-style-type: none"> <li>- 玻璃門並裝妥門鎖。</li> </ul> <p>相鄰客廳或主人睡房內之儲物房門</p> <ul style="list-style-type: none"> <li>- 玻璃門並裝妥門鎖(41樓C單位之儲物房設木門配木門框及裝飾封口線，並裝妥門鎖。)</li> </ul> <p>廚房內之儲物房門</p> <ul style="list-style-type: none"> <li>- 木門配金屬框及門鎖。面向廚房的門扇面裝有鏡面裝飾，面向儲物房內的門扇面裝有膠板面。儲物房內廁所門為玻璃趟門。</li> </ul> <p>通往露台/工作平台/平台的門</p> <ul style="list-style-type: none"> <li>- 鋁框玻璃(雙層中空玻璃)趟門，趟門及推拉門。詳情請參閱「發展項目的住宅物業的樓面平面圖」。</li> </ul>
b) 浴室	<ul style="list-style-type: none"> <li>- 檯面鋪砌天然石材。</li> <li>- 不銹鋼飾面木鏡櫃。</li> <li>- 釉面陶瓷坐廁。</li> <li>- 釉面陶瓷洗手盆配鍍鉻冷熱水龍頭。</li> <li>- 不銹鋼淋浴柱(6樓A單位及16樓A單位主人房浴室除外)。</li> <li>- 主人房浴室裝設1500毫米長x700毫米闊x418毫米高搪瓷鑄鐵浴缸配鍍鉻浴缸冷熱水龍頭。(6樓A單位及16樓A單位除外。這兩個單位主人房浴室裝設1400毫米長x700毫米闊x435毫米高搪瓷鑄鐵浴缸配鍍鉻浴缸及花灑冷熱水龍頭、花灑套裝及頂頭花灑。)</li> <li>- 設有鍍鉻廁紙格、鍍鉻毛巾棍；浴室門上設有不銹鋼毛巾棍及人造皮革和不銹鋼合成的雜誌架。</li> <li>- 所有浴室均設有一部電視。浴室如同時設有企缸及浴缸則另設有多一部電視。</li> <li>- 鏡櫃內設有USB及HDMI連接點及AV複合端子。</li> <li>- 設有抽濕機、電熱水爐及抽氣系統。</li> <li>- 冷、熱水喉採用銅喉。</li> <li>- 所有窗口設有手動百葉簾。</li> </ul>

c) 廚房	<ul style="list-style-type: none"> <li>- 木製廚櫃組合配玻璃及木紋飾面門板。</li> <li>- 不銹鋼洗滌盆配鍍鉻冷熱水龍頭。</li> <li>- 三房或以上單位設有一部電視。</li> <li>- 設有電熱水爐及抽氣系統。</li> <li>- 三房或以上單位之廚房均安裝“Panasonic”分體式(管道式)冷暖氣機。</li> <li>- 消防裝置及設備：設有花灑頭，煙霧感應器及火警指示燈。</li> <li>- 冷、熱水喉採用銅喉。</li> <li>- 6樓A及C單位；7樓A、B、C、D及E單位；8樓至15樓A、B、C、D、E、F及G單位；16樓A、B、C、D及E單位；17樓至19樓A、B、C、D、E及F單位；20樓至32樓B、C及D單位；33樓至38樓B及C單位；39樓B單位及41樓B單位的廚房裝有手動百葉簾。</li> </ul>
d) 睡房	所有窗口及通往露台、工作平台及/或平台的門均設有單路軌電動窗簾。
e) 電話	<p>客/飯廳、睡房、書房及相鄰客廳及睡房之儲物房均裝妥電話插座。</p> <p>有關電話插座之位置及數目，請參閱「單位機電裝置數量說明表」及「機電裝置平面圖」。</p>
f) 天線	<p>所有客/飯廳、睡房、書房及相鄰客廳及睡房之儲物房均裝妥電視/電台接收插座，可接收本地高清電視/電台節目。</p> <p>有關天線之位置及數目，請參閱「單位機電裝置數量說明表」及「機電裝置平面圖」。</p>
g) 電力裝置	<p>裝置入牆暗線燈位及插座(提供三相電力供電並備有配電箱及微型斷路器)。</p> <p>有關燈位及插座之位置及數目，請參閱「單位機電裝置數量說明表」及「機電裝置平面圖」。</p>
h) 氣體供應	廚房安裝煤氣喉及接駁至煤氣煮食爐。

i) 洗衣機接駁點	2合1洗衣乾衣機連接位位於廚房內。(33樓至38樓A及D單位；39樓及41樓A及C單位及42樓A及B單位的連接位位於客/飯廳。)
j) 供水	冷、熱水喉採用銅喉。水喉隱藏於牆中或內藏於假天花、假陣或櫃中。廚房及浴室有熱水供應。
<b>4. 雜項</b>	
細項	描述
a) 升降機	<p>客用穿梭升降機設有3部“Mitsubishi”(型號：Elenessa)空調客用穿梭升降機連接以下樓層：地下及3樓，其中2部也可到達2樓會所。</p> <p>客用升降機設有4部“Mitsubishi”(型號：Nexway)空調客用升降機連接以下樓層：由3樓至42樓，其中2部也可到達天台。</p>
b) 信箱	平台住宅入口大堂設有每戶不銹鋼信箱。
c) 垃圾收集	每層住宅樓層設有垃圾及物料回收室，並會運送至地下垃圾房。
d) 水錶、電錶及氣體錶	每戶專用之獨立電錶及水錶均設於每層錶房。煤氣錶安裝於各單位內。
<b>5. 保安設施</b>	
地下住宅入口大堂、3樓住宅入口大堂及升降機內均設有閉路電視照相機連接保安控制室。每戶單位均設有訪客彩色對講機。發展項目提供訪客對講機系統及住戶專用智能卡系統。	

賣方承諾如該發展項目中沒有安裝指明的品牌名稱或產品型號的升降機或設備，便會安裝品質相若的升降機或設備。

## 6. 設備說明

適用於客/飯廳/廚房/廚房內儲物房的洗手間  
每個單位均隨樓附送及/或裝置以下設備：

樓層	6樓	7樓	8樓 - 15樓	16樓	17樓 - 19樓	20樓 - 32樓
單位	C	A、B、C、D及E	A、B、C、D、E、F及G	B、C、D及E	A、B、C、D、E及F	A、B、C、D及E

設備	品牌	型號
客/飯廳電視	LG	49UF8500
煤氣煮食爐	Siemens	ER326AB92X
電磁煮食爐	Siemens	EH375ME11E
抽油煙機	Gaggenau	AH900-161
雪櫃	Siemens	KI28NP60
微波爐	Gaggenau	BMP224-110或BMP225-110
酒櫃	Gorenje	XWC150X
2合1洗衣乾衣機	Siemens	WK14D540HK
廚房抽氣扇	Panasonic	FV-04NU1H
廚房電熱水爐	Stiebel Eltron	DHM 6

樓層	6樓	16樓
單位	A及B	A

設備	品牌	型號
客/飯廳電視	LG	55UF8500
廚房電視	Magic TV	MTK101
煤氣煮食爐	Gaggenau	VG231-334SG及VG232-334SG
抽油煙機	Gaggenau	AH900-161
雪櫃	Miele	KFN9753iD
蒸焗爐	Gaggenau	BSP250-110或BSP251-110
微波爐	Gaggenau	BMP224-110或BMP225-110
酒櫃	Gorenje	XWC340X
2合1洗衣乾衣機	Miele	WT2789 I WPM
廚房抽氣扇	Panasonic	FV-04NU1H
廚房內儲物房的洗手間抽氣扇	Panasonic	FV-04NU1H
廚房電熱水爐	Stiebel Eltron	DHM 6
廚房內儲物房的洗手間電熱水爐	Stiebel Eltron	DHE 21 SLi

賣方承諾如該發展項目中沒有安裝指明的品牌名稱或產品型號的升降機或設備，便會安裝品質相若的升降機或設備。

# Fittings, Finishes and Appliances

## 裝置、裝修物料及設備

### 6. 設備說明

適用於客/飯廳/廚房/廚房內儲物房的洗手間  
每個單位均隨樓附送及/或裝置以下設備：

樓層	33樓 - 38樓	39樓	41樓
單位	B及C	B	B

設備	品牌	型號
客/飯廳電視	LG	55UF8500
廚房電視	Magic TV	MTK101
煤氣煮食爐	Gaggenau	VG231-334SG及VG232-334SG
抽油煙機	Gaggenau	AH900-161
雪櫃	Miele	KFN9753iD
蒸焗爐	Gaggenau	BSP250-110或BSP251-110
微波爐	Gaggenau	BMP224-110或BMP225-110
酒櫃	Gorenje	XWC340X
2合1洗衣乾衣機	Miele	WT2789 I WPM
廚房抽氣扇	Panasonic	FV-04NU1H
廚房電熱水爐	Stiebel Eltron	DHM 6

樓層	33樓 - 38樓	39樓	41樓	42樓
單位	D	C	C	B

設備	品牌	型號
客/飯廳電視	LG	55UF8500
廚房電視	Magic TV	MTK101
煤氣煮食爐	Gaggenau	VG231-334SG及VG232-334SG
電磁煮食爐	Gaggenau	VI230-134
抽油煙機(廚房)	Gaggenau	AH900-161
抽油煙機(客/飯廳)	Gaggenau	AW230-170
雪櫃	Miele	KFN9753iD
蒸焗爐	Gaggenau	BSP250-110或BSP251-110
微波爐	Gaggenau	BMP224-110或BMP225-110
咖啡機	Gaggenau	CMP250-110
酒櫃	Gorenje	XWC340X
2合1洗衣乾衣機	Miele	WT2789 I WPM
廚房抽氣扇	Panasonic	FV-04NU1H
廚房內儲物房的洗手間抽氣扇	Panasonic	FV-04NU1H
廚房電熱水爐	Stiebel Eltron	DHM 6
廚房內儲物房的洗手間電熱水爐	Stiebel Eltron	DHE 21 SLi

賣方承諾如該發展項目中沒有安裝指明的品牌名稱或產品型號的升降機或設備，便會安裝品質相若的升降機或設備。

## 6. 設備說明

適用於客/飯廳/廚房/廚房內儲物房的洗手間  
每個單位均隨樓附送及/或裝置以下設備：

樓層	33樓 - 38樓	39樓	41樓	42樓
單位	A	A	A	A

設備	品牌	型號
客/飯廳電視	LG	55UF8500
廚房電視	Magic TV	MTK101
煤氣煮食爐	Gaggenau	VG231-334SG及VG232-334SG
電磁煮食爐	Gaggenau	VI230-134
抽油煙機(廚房)	Gaggenau	AH900-161
抽油煙機(客/飯廳)	Gaggenau	AW230-170
雪櫃	Miele	KFN9753iD
蒸焗爐	Gaggenau	BSP250-110或BSP251-110
微波爐	Gaggenau	BMP224-110或BMP225-110
咖啡機	Gaggenau	CMP250-110
酒櫃	Gorenje	XWC340X
2合1洗衣乾衣機	Miele	WT2789 I WPM
廚房抽氣扇	Panasonic	FV-04NU1H
廚房內儲物房的洗手間抽氣扇	Panasonic	FV-15WH308
廚房電熱水爐	Stiebel Eltron	DHM 6
廚房內儲物房的洗手間電熱水爐	Stiebel Eltron	DHE 21 SLi

賣方承諾如該發展項目中沒有安裝指明的品牌名稱或產品型號的升降機或設備，便會安裝品質相若的升降機或設備。

# Fittings, Finishes and Appliances

## 裝置、裝修物料及設備

### 6. 設備說明

適用於浴室  
每個單位均隨樓附送及/或裝置以下設備：

樓層	6樓	33樓 - 38樓	39樓	41樓	42樓
單位	B	A、B、C及D	A、B及C	A、B及C	A及B

設備	品牌	型號
鏡櫃電視	Magic TV	MTB101
浴缸電視 (適用於主人房浴室)	Magic TV	MTB190
抽濕機	Cold Magic	CDH-22R2
電熱水爐	Stiebel Eltron	DHE21SLi及DHE27SLi
抽氣扇	Panasonic	FV-04NU1H

樓層	6樓	16樓
單位	A	A

設備	品牌	型號
鏡櫃電視	Magic TV	MTB101
抽濕機	Cold Magic	CDH-22R2
電熱水爐	Stiebel Eltron	DHE21SLi及DHE27SLi
抽氣扇	Panasonic	FV-04NU1H

樓層	6樓	7樓	8樓 - 15樓	16樓	17樓 - 19樓	20樓 - 32樓
單位	C	A、B、C、D及E	A、B、C、D、E、F及G	B、C、D及E	A、B、C、D、E及F	A、B、C、D、E

設備	品牌	型號
鏡櫃電視	Magic TV	MTB101
抽濕機	Cold Magic	CDH-22R2
電熱水爐	Stiebel Eltron	DHE21SLi
抽氣扇	Panasonic	FV-04NU1H

賣方承諾如該發展項目中沒有安裝指明的品牌名稱或產品型號的升降機或設備，便會安裝品質相若的升降機或設備。

## 6. 設備說明

適用於客/飯廳/睡房/書房/儲物房/廚房  
每個單位均隨樓附送及/或裝置以下設備：

樓層	6樓	7樓	8樓 - 15樓	20樓 - 32樓
單位	C	E	G	B、C及D

設備	品牌	型號
(冷暖氣機)於客/飯廳/睡房/儲物房	Panasonic	CS-YE9MKA及CU-YE9MKA CS-YE12MKA及CU-YE12MKA CS-YE24MKA及CU-YE24MKA

樓層	7樓	8樓 - 15樓	16樓	17樓 - 19樓	20樓 - 32樓
單位	A及D	A及F	E	A及F	A及E

設備	品牌	型號
(冷暖氣機)於客/飯廳/睡房/書房	Panasonic	CS-YE9MKA及CU-YE9MKA CS-YE18MKA及CU-YE18MKA CS-YE24MKA及CU-YE24MKA

樓層	7樓	8樓 - 15樓	16樓	17樓 - 19樓
單位	B及C	B、C、D及E	B、C及D	B、C、D及E

設備	品牌	型號
(冷暖氣機)於客/飯廳/睡房	Panasonic	CS-YE12MKA及CU-YE12MKA CS-YE24MKA及CU-YE24MKA

樓層	6樓	16樓
單位	A	A

設備	品牌	型號
(冷暖氣機)於客/飯廳/睡房/儲物房/廚房	Panasonic	CS-YE9MKA及CU-YE9MKA CS-YE24MKA及CU-YE24MKA CS-E9JD4H及CU-E9JBH CS-E18JD4H及CU-E18JBH

樓層	6樓
單位	B

設備	品牌	型號
(冷暖氣機)於客/飯廳/睡房/儲物房/廚房	Panasonic	CS-YE9MKA及CU-YE9MKA CS-YE12MKA及CU-YE12MKA CS-YE18MKA及CU-YE18MKA CS-E18JD4H及CU-E18JBH CS-E9NKEW及CS-E10KD3EA 及CU-3E18LBE

樓層	33樓 - 38樓	39樓	41樓
單位	B及C	B	A、B及C

設備	品牌	型號
(冷暖氣機)於客/飯廳/睡房/儲物房/廚房	Panasonic	CS-YE9MKA及CU-YE9MKA CS-YE12MKA及CU-YE12MKA CS-E9JD4H及CU-E9JBH CS-E23JD4H及CU-E23JBH

賣方承諾如該發展項目中沒有安裝指明的品牌名稱或產品型號的升降機或設備，便會安裝品質相若的升降機或設備。



# Fittings, Finishes and Appliances

## 裝置、裝修物料及設備

### 6. 設備說明

適用於客/飯廳/睡房/書房/儲物房/廚房  
每個單位均隨樓附送及/或裝置以下設備：

樓層	33樓 - 38樓	39樓
單位	A及D	A及C

設備	品牌	型號
(冷暖氣機)於客/飯廳/睡房/儲物房/廚房	Panasonic	CS-YE9MKA及CU-YE9MKA CS-YE18MKA及CU-YE18MKA CS-E9JD4H及CU-E9JBH CS-E18JD4H及CU-E18JBH

樓層	42樓
單位	A

設備	品牌	型號
(冷暖氣機)於客/飯廳/睡房/儲物房/廚房	Panasonic	CS-YE9MKA及CU-YE9MKA CS-YE18MKA及CU-YE18MKA CS-E9JD4H及CU-E9JBH CS-E23JD4H及CU-E23JBH

樓層	42樓
單位	B

設備	品牌	型號
(冷暖氣機)於客/飯廳/睡房/儲物房/廚房	Panasonic	CS-YE9MKA及CU-YE9MKA CS-YE18MKA及CU-YE18MKA CS-YE24MKA及CU-YE24MKA CS-E9JD4H及CU-E9JBH

賣方承諾如該發展項目中沒有安裝指明的品牌名稱或產品型號的升降機或設備，便會安裝品質相若的升降機或設備。

**Schedule of mechanical & electrical provisions of units**  
**單位機電裝置數量說明表**

Floor 樓層			6/F樓			7/F樓					8/F樓 - 15/F樓 (Except 13/F & 14/F) (不包括13樓及14樓)							16/F樓				
Unit 單位	Exposed Type 外露形	Non-exposed Type 非外露形	A	B	C	A	B	C	D	E	A	B	C	D	E	F	G	A	B	C	D	E
LIVING/DINING ROOM AND CORRIDOR 客/飯廳和走廊	TV/FM Outlet 電視/電台天線插座		2	1	1	1	1	1	1	1	1	1	1	1	1	1	1	2	1	1	1	1
	Telephone Outlet 電話插座		3	2	2	2	2	2	2	2	2	2	2	2	2	2	2	3	2	2	2	2
	13A Socket Outlet 單位電插座		0	1	0	0	0	0	0	0	0	0	0	0	0	0	0	0	0	0	0	0
	13A Twin Socket Outlet 雙位電插座		5	3	3	3	3	3	3	3	3	3	3	3	3	3	3	5	3	3	3	3
	Switch for A/C Unit (Wall-mounted) 冷氣機開關制(掛牆式)		0	0	1	1	1	1	1	1	1	1	1	1	1	1	1	0	1	1	1	1
	TV/FM Outlet 電視/電台天線插座		1	1	1	1	1	1	1	1	1	1	1	1	1	1	1	1	1	1	1	1
	13A Socket Outlet for TV 單位電插座供電視		1	1	1	1	1	1	1	1	1	1	1	1	1	1	1	1	1	1	1	1
	Fused Spur Unit/Socket Outlet for Electric Curtain 接線座供電窗簾 Switch for A/C Unit (Duct type) 冷氣機開關制(管道式)		4	4	1	2	1	1	2	1	2	1	1	1	1	2	1	4	1	1	1	2
MASTER BEDROOM 主人睡房	TV/FM Outlet 電視/電台天線插座		3	2	0	0	0	0	0	0	0	0	0	0	0	0	0	3	0	0	0	0
	Telephone Outlet 電話插座		3	2	0	0	0	0	0	0	0	0	0	0	0	0	0	3	0	0	0	0
	13A Socket Outlet 單位電插座		0	2	0	0	0	0	0	0	0	0	0	0	0	0	0	0	0	0	0	0
	13A Twin Socket Outlet 雙位電插座		4	3	0	0	0	0	0	0	0	0	0	0	0	0	0	4	0	0	0	0
	Switch for A/C Unit (Wall-mounted) 冷氣機開關制(掛牆式)		1	1	0	0	0	0	0	0	0	0	0	0	0	0	0	1	0	0	0	0
	Fused Spur Unit/Socket Outlet for Electric Curtain 接線座供電窗簾		3	1	0	0	0	0	0	0	0	0	0	0	0	0	0	2	0	0	0	0
BR 睡房	TV/FM Outlet 電視/電台天線插座		0	0	0	0	1	1	0	0	0	1	1	1	1	0	0	0	1	1	1	0
	Telephone Outlet 電話插座		0	0	0	0	1	1	0	0	0	1	1	1	1	0	0	0	1	1	1	0
	13A Twin Socket Outlet 雙位電插座		0	0	0	0	3	3	0	0	0	3	3	3	3	0	0	0	3	3	3	0
	Switch for A/C Unit (Wall-mounted) 冷氣機開關制(掛牆式)		0	0	0	0	1	1	0	0	0	1	1	1	1	0	0	0	1	1	1	0
	Fused Spur Unit/Socket Outlet for Electric Curtain 接線座供電窗簾		0	0	0	0	1	1	0	0	0	1	1	1	1	0	0	0	1	1	1	0
BR1 睡房1	TV/FM Outlet 電視/電台天線插座		1	1	1	1	0	0	1	1	1	0	0	0	0	1	1	1	0	0	0	1
	Telephone Outlet 電話插座		1	1	1	1	0	0	1	1	1	0	0	0	0	1	1	1	0	0	0	1
	13A Socket Outlet 單位電插座		1	1	1	1	0	0	1	1	1	0	0	0	0	1	1	1	0	0	0	1
	13A Twin Socket Outlet 雙位電插座		1	1	3	3	0	0	3	3	3	0	0	0	0	3	3	1	0	0	0	3
	Switch for A/C Unit (Wall-mounted) 冷氣機開關制(掛牆式)		1	1	1	1	0	0	1	1	1	0	0	0	0	1	1	1	0	0	0	1
	Fused Spur Unit/Socket Outlet for Electric Curtain 接線座供電窗簾		1	1	1	4	0	0	4	1	4	0	0	0	0	4	1	1	0	0	0	4

# Fittings, Finishes and Appliances

## 裝置、裝修物料及設備

Schedule of mechanical & electrical provisions of units  
單位機電裝置數量說明表

Floor 樓層			6/F樓			7/F樓					8/F樓 - 15/F樓 (Except 13/F & 14/F) (不包括13樓及14樓)							16/F樓					
Unit 單位	Exposed Type 外露形	Non-exposed Type 非外露形	A	B	C	A	B	C	D	E	A	B	C	D	E	F	G	A	B	C	D	E	
BR2 睡房2	TV/FM Outlet 電視/電台天線插座		1	1	1	1	0	0	1	1	1	0	0	0	0	1	1	1	0	0	0	0	1
	Telephone Outlet 電話插座		1	1	1	1	0	0	1	1	1	0	0	0	0	1	1	1	0	0	0	0	1
	13A Socket Outlet 單位電插座		1	1	1	1	0	0	1	1	1	0	0	0	0	1	1	1	0	0	0	0	1
	13A Twin Socket Outlet 雙位電插座		1	3	1	1	0	0	1	1	1	0	0	0	0	1	1	1	0	0	0	0	1
	Switch for A/C Unit (Wall-mounted) 冷氣機開關制(掛牆式)		1	1	1	1	0	0	1	1	1	0	0	0	0	1	1	1	0	0	0	0	1
		Fused Spur Unit/Socket Outlet for Electric Curtain 接線座供電窗簾	1	4	1	1	0	0	1	1	1	0	0	0	0	1	1	1	0	0	0	0	1
KITCHEN 廚房		13A Twin Socket Outlet 雙位電插座	1	1	1	1	1	1	1	1	1	1	1	1	1	1	1	1	1	1	1	1	1
		TV/FM Outlet 電視/電台天線插座	1	1	0	0	0	0	0	0	0	0	0	0	0	0	0	0	1	0	0	0	0
		13A Socket Outlet for KTV 單位電插座供廚房電視	1	1	0	0	0	0	0	0	0	0	0	0	0	0	0	0	1	0	0	0	0
		Fused Spur Unit/Socket Outlet for Exhaust Fan 接線座供抽氣扇	1	1	1	1	1	1	1	1	1	1	1	1	1	1	1	1	1	1	1	1	1
		Fused Spur Unit/Socket Outlet for Cooker Hood 接線座供抽油煙機	1	1	1	1	1	1	1	1	1	1	1	1	1	1	1	1	1	1	1	1	1
		Fused Spur Unit/Socket Outlet for Gas Cooking Hob 接線座供煤氣煮食爐	2	2	1	1	1	1	1	1	1	1	1	1	1	1	1	1	2	1	1	1	1
		Fused Spur Unit/Socket Outlet for Microwave Oven 接線座供微波爐	1	1	1	1	1	1	1	1	1	1	1	1	1	1	1	1	1	1	1	1	1
		Fused Spur Unit/Socket Outlet for Refrigerator 接線座供雪櫃	1	1	1	1	1	1	1	1	1	1	1	1	1	1	1	1	1	1	1	1	1
		Fused Spur Unit/Socket Outlet for 2-in-1 Washer Dryer Machine 接線座供洗衣乾衣機	1	1	1	1	1	1	1	1	1	1	1	1	1	1	1	1	1	1	1	1	1
		Fused Spur Unit/Socket Outlet for Steam Oven 接線座供蒸焗爐	1	1	0	0	0	0	0	0	0	0	0	0	0	0	0	0	1	0	0	0	0
		Fused Spur Unit/Socket Outlet for Wine Cellar 接線座供酒櫃	1	1	1	1	1	1	1	1	1	1	1	1	1	1	1	1	1	1	1	1	1
		Fused Spur Unit/Socket Outlet for Door Bell 接線座供門鐘	1	1	1	1	1	1	1	1	1	1	1	1	1	1	1	1	1	1	1	1	1
		Connection Unit For Induction Hob 接線座供電磁煮食爐	0	0	1	1	1	1	1	1	1	1	1	1	1	1	1	1	0	1	1	1	1
		Switch for A/C Unit (Duct type) 冷氣機開關制(管道式)	1	1	0	0	0	0	0	0	0	0	0	0	0	0	0	0	1	0	0	0	0
	Power Point for 6 kw Instantaneous Water Heater 供電位供6 kw 即熱式熱水爐	1	1	1	1	1	1	1	1	1	1	1	1	1	1	1	1	1	1	1	1	1	
BATHROOM IN MASTER BEDROOM 主人房浴室		13A Socket Outlet 單位電插座	1	1	0	0	0	0	0	0	0	0	0	0	0	0	0	1	0	0	0	0	
		13A Twin Socket Outlet 雙位電插座	1	1	0	0	0	0	0	0	0	0	0	0	0	0	0	1	0	0	0	0	
		TV/FM Outlet 電視/電台天線插座	1	2	0	0	0	0	0	0	0	0	0	0	0	0	0	0	1	0	0	0	0
		13A Socket Outlet for BTV 單位電插座供浴室電視	1	2	0	0	0	0	0	0	0	0	0	0	0	0	0	0	1	0	0	0	0
		Fused Spur Unit/Socket Outlet for Exhaust Fan 接線座供抽氣扇	1	1	0	0	0	0	0	0	0	0	0	0	0	0	0	0	1	0	0	0	0
		Fused Spur Unit/Socket Outlet for Dehumidifier 接線座供除濕器	1	1	0	0	0	0	0	0	0	0	0	0	0	0	0	0	1	0	0	0	0
	Power Point for 24 kw Instantaneous Water Heater 供電位供24 kw即熱式熱水爐	1	1	0	0	0	0	0	0	0	0	0	0	0	0	0	0	1	0	0	0	0	

**Schedule of mechanical & electrical provisions of units**  
**單位機電裝置數量說明表**

Floor 樓層			6/F樓			7/F樓					8/F樓 - 15/F樓 (Except 13/F & 14/F) (不包括13樓及14樓)							16/F樓						
Unit 單位	Exposed Type 外露形	Non-exposed Type 非外露形	A	B	C	A	B	C	D	E	A	B	C	D	E	F	G	A	B	C	D	E		
BATHROOM 浴室	13A Socket Outlet 單位電插座		1	1	1	1	1	1	1	1	1	1	1	1	1	1	1	1	1	1	1	1	1	
	13A Twin Socket Outlet 雙位電插座		1	1	1	1	1	1	1	1	1	1	1	1	1	1	1	1	1	1	1	1	1	
		TV/FM Outlet 電視/電台天線插座		1	1	1	1	1	1	1	1	1	1	1	1	1	1	1	1	1	1	1	1	1
		13A Socket Outlet for BTV 單位電插座供浴室電視		1	1	1	1	1	1	1	1	1	1	1	1	1	1	1	1	1	1	1	1	1
		Fused Spur Unit/Socket Outlet for Exhaust Fan 接線座供抽氣扇		1	1	1	1	1	1	1	1	1	1	1	1	1	1	1	1	1	1	1	1	1
		Fused Spur Unit/Socket Outlet for Dehumidifier 接線座供除濕器		1	1	1	1	1	1	1	1	1	1	1	1	1	1	1	1	1	1	1	1	1
		Power Point for 18 kw Instantaneous Water Heater 供電位供 18 kw 即熱式熱水爐		1	1	1	1	1	1	1	1	1	1	1	1	1	1	1	1	1	1	1	1	1
LAVATORY INSIDE KITCHEN STORE 廚房內 儲物房的洗手間		Fused Spur Unit/Socket Outlet for Exhaust Fan 接線座供抽氣扇	1	1	0	0	0	0	0	0	0	0	0	0	0	0	0	1	0	0	0	0	0	
		Power Point for 18 kw Instantaneous Water Heater 供電位供 18 kw 即熱式熱水爐	1	1	0	0	0	0	0	0	0	0	0	0	0	0	0	0	1	0	0	0	0	
STORE RM (INSIDE KITCHEN) 儲物房(廚房內)		TV/FM Outlet 電視/電台天線插座	0	0	0	0	0	0	0	0	0	0	0	0	0	0	0	0	0	0	0	0	0	
		Telephone Outlet 電話插座	0	0	0	0	0	0	0	0	0	0	0	0	0	0	0	0	0	0	0	0	0	
		13A Socket Outlet 單位電插座	1	1	0	0	0	0	0	0	0	0	0	0	0	0	0	0	1	0	0	0	0	
		13A Twin Socket Outlet 雙位電插座	0	0	0	0	0	0	0	0	0	0	0	0	0	0	0	0	0	0	0	0	0	
		Switch for A/C Unit (Wall-mounted) 冷氣機開關制(掛牆式)	1	1	0	0	0	0	0	0	0	0	0	0	0	0	0	0	1	0	0	0	0	
STORE RM (INSIDE MASTER BEDROOM/ INSIDE LIVING/ DINING ROOM) 儲物房(主人睡房內/ 客/飯廳內)		TV/FM Outlet 電視/電台天線插座	1	1	0	0	0	0	0	0	0	0	0	0	0	0	0	1	0	0	0	0	0	
		Telephone Outlet 電話插座	1	1	0	0	0	0	0	0	0	0	0	0	0	0	0	1	0	0	0	0	0	
		13A Socket Outlet 單位電插座	1	1	0	0	0	0	0	0	0	0	0	0	0	0	0	0	1	0	0	0	0	
		13A Twin Socket Outlet 雙位電插座	0	0	0	0	0	0	0	0	0	0	0	0	0	0	0	0	0	0	0	0	0	
		Switch for A/C Unit (Wall-mounted) 冷氣機開關制(掛牆式)	1	1	0	0	0	0	0	0	0	0	0	0	0	0	0	0	1	0	0	0	0	
		Fused Spur Unit/Socket Outlet for Electric Curtain 接線座供電窗簾	1	1	0	0	0	0	0	0	0	0	0	0	0	0	0	0	1	0	0	0	0	

# Fittings, Finishes and Appliances

## 裝置、裝修物料及設備

Schedule of mechanical & electrical provisions of units  
單位機電裝置數量說明表

Floor 樓層			17/F樓 - 19/F樓						20/F樓 - 32/F樓 ( Except 24/F) (不包括24樓)					33/F樓 - 38/F樓 (Except 34/F) (不包括34樓)				39/F樓			41/F樓			42/F樓	
Unit 單位	Exposed Type 外露形	Non-exposed Type 非外露形	A	B	C	D	E	F	A	B	C	D	E	A	B	C	D	A	B	C	A	B	C	A	B
LIVING/DINING ROOM AND CORRIDOR 客/飯廳和走廊	TV/FM Outlet 電視/電台天線插座		1	1	1	1	1	1	1	1	1	1	1	1	1	1	1	1	1	1	1	1	2	1	3
	Telephone Outlet 電話插座		2	2	2	2	2	2	2	2	2	2	2	2	2	2	2	2	2	2	4	2	3	4	4
	13A Socket Outlet 單位電插座		0	0	0	0	0	0	0	0	0	0	0	0	1	1	0	0	1	0	2	1	3	1	3
	13A Twin Socket Outlet 雙位電插座		3	3	3	3	3	3	3	3	3	3	3	3	3	3	3	3	3	3	2	3	3	4	3
	Switch for A/C Unit (Wall-mounted) 冷氣機開關制(掛牆式)		1	1	1	1	1	1	1	1	1	1	1	0	0	0	0	0	0	0	0	0	0	0	2
	TV/FM Outlet 電視/電台天線插座		1	1	1	1	1	1	1	1	1	1	1	1	1	1	1	1	1	1	1	1	1	1	0
	13A Socket Outlet for TV 單位電插座供電視		1	1	1	1	1	1	1	1	1	1	1	1	1	1	1	1	1	1	1	1	1	1	0
Fused Spur Unit/Socket Outlet for Electric Curtain 接線座供電窗簾		2	1	1	1	1	2	2	1	1	1	2	2	1	1	4	2	1	4	6	2	6	6	6	
Switch for A/C Unit (Duct type) 冷氣機開關制(管道式)		0	0	0	0	0	0	0	0	0	0	0	2	1	1	2	2	1	2	2	1	2	2	0	
MASTER BEDROOM 主人睡房	TV/FM Outlet 電視/電台天線插座		0	0	0	0	0	0	0	0	0	0	0	1	1	1	1	1	1	1	2	1	2	2	2
	Telephone Outlet 電話插座		0	0	0	0	0	0	0	0	0	0	0	1	1	1	1	1	1	1	2	1	2	3	3
	13A Socket Outlet 單位電插座		0	0	0	0	0	0	0	0	0	0	0	1	1	1	1	1	1	1	1	1	2	1	1
	13A Twin Socket Outlet 雙位電插座		0	0	0	0	0	0	0	0	0	0	0	3	3	3	3	3	3	3	3	3	3	3	3
	Switch for A/C Unit (Wall-mounted) 冷氣機開關制(掛牆式)		0	0	0	0	0	0	0	0	0	0	0	1	1	1	1	1	1	1	1	1	1	1	1
	Fused Spur Unit/Socket Outlet for Electric Curtain 接線座供電窗簾		0	0	0	0	0	0	0	0	0	0	0	4	1	1	4	4	1	4	1	1	1	1	1
BR 睡房	TV/FM Outlet 電視/電台天線插座		0	1	1	1	1	0	0	0	0	0	0	0	0	0	0	0	0	0	0	0	0	0	0
	Telephone Outlet 電話插座		0	1	1	1	1	0	0	0	0	0	0	0	0	0	0	0	0	0	0	0	0	0	0
	13A Twin Socket Outlet 雙位電插座		0	3	3	3	3	0	0	0	0	0	0	0	0	0	0	0	0	0	0	0	0	0	0
	Switch for A/C Unit (Wall-mounted) 冷氣機開關制(掛牆式)		0	1	1	1	1	0	0	0	0	0	0	0	0	0	0	0	0	0	0	0	0	0	0
	Fused Spur Unit/Socket Outlet for Electric Curtain 接線座供電窗簾		0	1	1	1	1	0	0	0	0	0	0	0	0	0	0	0	0	0	0	0	0	0	0
BR1 睡房1	TV/FM Outlet 電視/電台天線插座		1	0	0	0	0	1	1	1	1	1	1	1	1	1	1	1	1	1	1	1	1	1	1
	Telephone Outlet 電話插座		1	0	0	0	0	1	1	1	1	1	1	1	1	1	1	1	1	1	1	1	1	1	1
	13A Socket Outlet 單位電插座		1	0	0	0	0	1	1	1	1	1	1	1	1	1	1	1	1	1	1	1	1	1	1
	13A Twin Socket Outlet 雙位電插座		3	0	0	0	0	3	3	3	3	3	3	1	1	1	1	1	1	1	1	1	1	1	1
	Switch for A/C Unit (Wall-mounted) 冷氣機開關制(掛牆式)		1	0	0	0	0	1	1	1	1	1	1	1	1	1	1	1	1	1	1	1	1	1	1
	Fused Spur Unit/Socket Outlet for Electric Curtain 接線座供電窗簾		4	0	0	0	0	4	4	1	1	1	4	1	1	1	1	1	1	1	1	1	1	1	1

**Schedule of mechanical & electrical provisions of units**  
**單位機電裝置數量說明表**

Floor 樓層			17/F樓 - 19/F樓						20/F樓 - 32/F樓 ( Except 24/F) (不包括24樓)					33/F樓 - 38/F樓 (Except 34/F) (不包括34樓)				39/F樓			41/F樓			42/F樓	
Unit 單位	Exposed Type 外露形	Non-exposed Type 非外露形	A	B	C	D	E	F	A	B	C	D	E	A	B	C	D	A	B	C	A	B	C	A	B
BR2 睡房2	TV/FM Outlet 電視/電台天線插座		1	0	0	0	0	1	1	1	1	1	1	1	1	1	1	1	1	1	1	1	1	1	1
	Telephone Outlet 電話插座		1	0	0	0	0	1	1	1	1	1	1	1	1	1	1	1	1	1	1	1	1	1	1
	13A Socket Outlet 單位電插座		1	0	0	0	0	1	1	1	1	1	1	1	1	1	1	1	1	1	1	1	1	1	1
	13A Twin Socket Outlet 雙位電插座		1	0	0	0	0	1	1	1	1	1	1	1	1	1	1	1	1	1	1	1	1	1	1
	Switch for A/C Unit (Wall-mounted) 冷氣機開關制(掛牆式)		1	0	0	0	0	1	1	1	1	1	1	1	1	1	1	1	1	1	1	1	1	1	1
		Fused Spur Unit/Socket Outlet for Electric Curtain 接線座供電窗簾	1	0	0	0	0	1	1	1	1	1	1	1	1	1	1	1	1	1	1	1	1	1	1
BR3 睡房3	TV/FM Outlet 電視/電台天線插座		0	0	0	0	0	0	0	0	0	0	0	0	0	0	0	0	0	0	0	0	0	0	0
	Telephone Outlet 電話插座		0	0	0	0	0	0	0	0	0	0	0	0	0	0	0	0	0	0	0	0	0	0	0
	13A Socket Outlet 單位電插座		0	0	0	0	0	0	0	0	0	0	0	0	0	0	0	0	0	0	0	0	0	0	0
	13A Twin Socket Outlet 雙位電插座		0	0	0	0	0	0	0	0	0	0	0	0	0	0	0	0	0	0	0	0	0	0	0
	Switch for A/C Unit (Wall-mounted) 冷氣機開關制(掛牆式)		0	0	0	0	0	0	0	0	0	0	0	0	0	0	0	0	0	0	0	0	0	0	0
		Fused Spur Unit/Socket Outlet for Electric Curtain 接線座供電窗簾	0	0	0	0	0	0	0	0	0	0	0	0	0	0	0	0	0	0	0	0	0	0	0
KITCHEN 廚房	13A Twin Socket Outlet 雙位電插座		1	1	1	1	1	1	1	1	1	1	1	2	1	1	2	2	1	2	2	1	2	2	2
	TV/FM Outlet 電視/電台天線插座		0	0	0	0	0	0	0	0	0	0	0	1	1	1	1	1	1	1	1	1	1	1	1
	13A Socket Outlet for KTV 單位電插座供廚房電視		0	0	0	0	0	0	0	0	0	0	0	1	1	1	1	1	1	1	1	1	1	1	1
	Fused Spur Unit/Socket Outlet for Exhaust Fan 接線座供抽氣扇		1	1	1	1	1	1	1	1	1	1	1	1	1	1	1	1	1	1	1	1	1	1	1
	Fused Spur Unit/Socket Outlet for Cooker Hood 接線座供抽油煙機		1	1	1	1	1	1	1	1	1	1	1	2	1	1	2	2	1	2	2	1	2	2	2
	Fused Spur Unit/Socket Outlet for Gas Cooking Hob 接線座供煤氣煮食爐		1	1	1	1	1	1	1	1	1	1	1	2	2	2	2	2	2	2	2	2	2	2	2
	Fused Spur Unit/Socket Outlet for Microwave Oven 接線座供微波爐		1	1	1	1	1	1	1	1	1	1	1	1	1	1	1	1	1	1	1	1	1	1	1
	Fused Spur Unit/Socket Outlet for Refrigerator 接線座供雪櫃		1	1	1	1	1	1	1	1	1	1	1	1	1	1	1	1	1	1	1	1	1	1	1
	Fused Spur Unit/Socket Outlet for 2-in-1 Washer Dryer Machine 接線座供洗衣乾衣機		1	1	1	1	1	1	1	1	1	1	1	1	1	1	1	1	1	1	1	1	1	1	1
	Fused Spur Unit/Socket Outlet for Steam Oven 接線座供蒸焗爐		0	0	0	0	0	0	0	0	0	0	0	1	1	1	1	1	1	1	1	1	1	1	1
	Fused Spur Unit/Socket Outlet for Wine Cellar 接線座供酒櫃		1	1	1	1	1	1	1	1	1	1	1	1	1	1	1	1	1	1	1	1	1	1	1
	Fused Spur Unit/Socket Outlet for Coffee Machine 接線座供咖啡機		0	0	0	0	0	0	0	0	0	0	0	1	0	0	1	1	0	1	1	0	1	1	1
	Fused Spur Unit/Socket Outlet for Door Bell 接線座供門鐘		1	1	1	1	1	1	1	1	1	1	1	1	1	1	1	1	1	1	1	1	1	1	1
	Connection Unit For Induction Hob 接線座供電磁煮食爐		1	1	1	1	1	1	1	1	1	1	1	1	0	0	1	1	0	1	1	0	1	1	1
	Switch for A/C Unit (Duct type) 冷氣機開關制(管道式)		0	0	0	0	0	0	0	0	0	0	0	1	1	1	1	1	1	1	1	1	1	1	1
Power Point for 6 kw Instantaneous Water Heater 供電位供6 kw 即熱式熱水爐		1	1	1	1	1	1	1	1	1	1	1	1	1	1	1	1	1	1	1	1	1	1	1	

# Fittings, Finishes and Appliances

## 裝置、裝修物料及設備

Schedule of mechanical & electrical provisions of units  
單位機電裝置數量說明表

Floor 樓層			17/F樓 - 19/F樓						20/F樓 - 32/F樓 ( Except 24/F) (不包括24樓)					33/F樓 - 38/F樓 (Except 34/F) (不包括34樓)				39/F樓			41/F樓			42/F樓	
Unit 單位	Exposed Type 外露形	Non-exposed Type 非外露形	A	B	C	D	E	F	A	B	C	D	E	A	B	C	D	A	B	C	A	B	C	A	B
BATHROOM IN MASTER BEDROOM 主人房浴室	13A Socket Outlet 單位電插座		0	0	0	0	0	0	0	0	0	0	0	1	1	1	1	1	1	1	1	1	1	1	1
	13A Twin Socket Outlet 雙位電插座		0	0	0	0	0	0	0	0	0	0	0	1	1	1	1	1	1	1	1	1	1	1	1
		TV/FM Outlet 電視/電台天線插座	0	0	0	0	0	0	0	0	0	0	0	2	2	2	2	2	2	2	2	2	2	2	2
		13A Socket Outlet for BTV 單位電插座供浴室電視	0	0	0	0	0	0	0	0	0	0	0	2	2	2	2	2	2	2	2	2	2	2	2
		Fused Spur Unit/Socket Outlet for Exhaust Fan 接線座供抽氣扇	0	0	0	0	0	0	0	0	0	0	0	1	1	1	1	1	1	1	1	1	1	1	1
		Fused Spur Unit/Socket Outlet for Dehumidifier 接線座供除濕器	0	0	0	0	0	0	0	0	0	0	0	1	1	1	1	1	1	1	1	1	1	1	1
	Power Point for 24 kw Instantaneous Water Heater 供電位供24 kw即熱式熱水爐	0	0	0	0	0	0	0	0	0	0	0	1	1	1	1	1	1	1	1	1	1	1	1	
BATHROOM IN BR2 睡房2的浴室	13A Socket Outlet 單位電插座		0	0	0	0	0	0	0	0	0	0	0	0	0	0	0	0	0	0	0	0	0	0	1
	13A Twin Socket Outlet 雙位電插座		0	0	0	0	0	0	0	0	0	0	0	0	0	0	0	0	0	0	0	0	0	0	1
		TV/FM Outlet 電視/電台天線插座	0	0	0	0	0	0	0	0	0	0	0	0	0	0	0	0	0	0	0	0	0	0	1
		13A Socket Outlet for BTV 單位電插座供浴室電視	0	0	0	0	0	0	0	0	0	0	0	0	0	0	0	0	0	0	0	0	0	0	1
		Fused Spur Unit/Socket Outlet for Exhaust Fan 接線座供抽氣扇	0	0	0	0	0	0	0	0	0	0	0	0	0	0	0	0	0	0	0	0	0	0	1
		Fused Spur Unit/Socket Outlet for Dehumidifier 接線座供除濕器	0	0	0	0	0	0	0	0	0	0	0	0	0	0	0	0	0	0	0	0	0	0	1
	Power Point for 18 kw Instantaneous Water Heater 供電位供18 kw即熱式熱水爐	0	0	0	0	0	0	0	0	0	0	0	0	0	0	0	0	0	0	0	0	0	0	1	
BATHROOM 浴室	13A Socket Outlet 單位電插座		1	1	1	1	1	1	1	1	1	1	1	1	1	1	1	1	1	1	1	1	1	1	1
	13A Twin Socket Outlet 雙位電插座		1	1	1	1	1	1	1	1	1	1	1	1	1	1	1	1	1	1	1	1	1	1	1
		TV/FM Outlet 電視/電台天線插座	1	1	1	1	1	1	1	1	1	1	1	1	1	1	1	1	1	1	1	1	1	1	1
		13A Socket Outlet for BTV 單位電插座供浴室電視	1	1	1	1	1	1	1	1	1	1	1	1	1	1	1	1	1	1	1	1	1	1	1
		Fused Spur Unit/Socket Outlet for Exhaust Fan 接線座供抽氣扇	1	1	1	1	1	1	1	1	1	1	1	1	1	1	1	1	1	1	1	1	1	1	1
		Fused Spur Unit/Socket Outlet for Dehumidifier 接線座供除濕器	1	1	1	1	1	1	1	1	1	1	1	1	1	1	1	1	1	1	1	1	1	1	1
	Power Point for 18 kw Instantaneous Water Heater 供電位供18 kw即熱式熱水爐	1	1	1	1	1	1	1	1	1	1	1	1	1	1	1	1	1	1	1	1	1	1	1	
LAVATORY INSIDE KITCHEN STORE 廚房內 儲物房的洗手間		Fused Spur Unit/Socket Outlet for Exhaust Fan 接線座供抽氣扇	0	0	0	0	0	0	0	0	0	0	1	0	0	1	1	0	1	1	0	1	1	1	
		Power Point for 18 kw Instantaneous Water Heater 供電位供18 kw 即熱式熱水爐	0	0	0	0	0	0	0	0	0	0	1	0	0	1	1	0	1	1	0	1	1	1	

**Schedule of mechanical & electrical provisions of units**  
**單位機電裝置數量說明表**

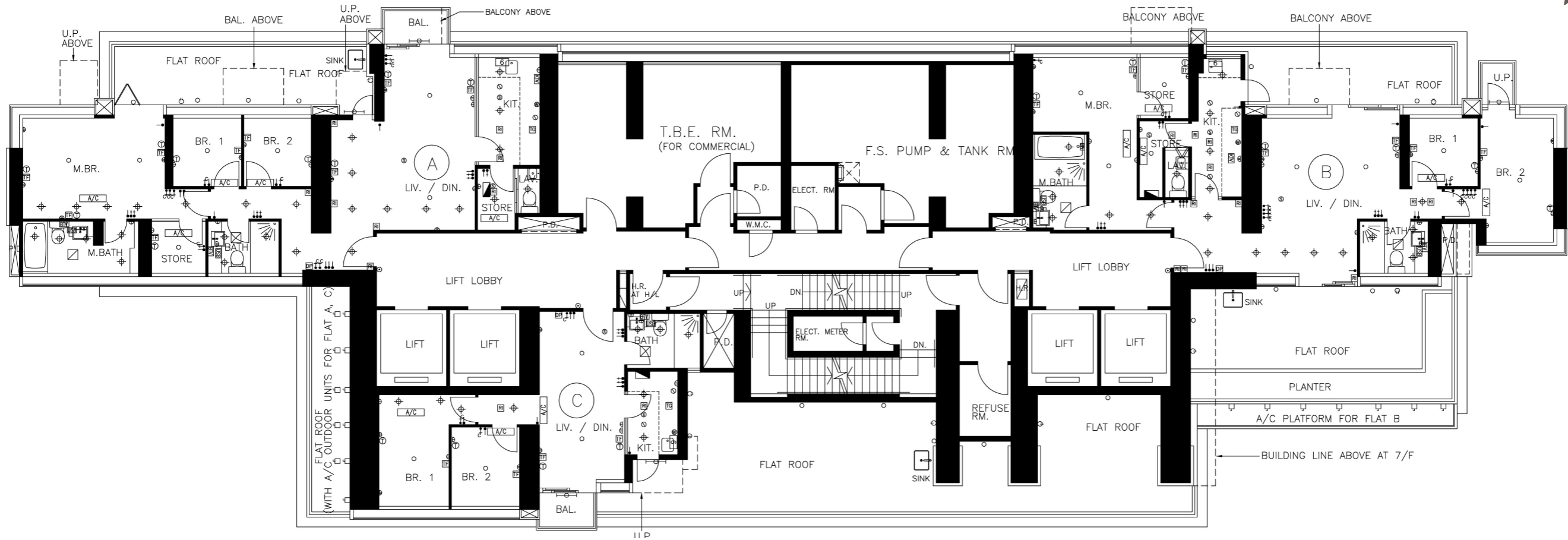
Floor 樓層			17/F樓 - 19/F樓						20/F樓 - 32/F樓 ( Except 24/F) (不包括24樓)					33/F樓 - 38/F樓 (Except 34/F) (不包括34樓)				39/F樓			41/F樓			42/F樓	
Unit 單位	Exposed Type 外露形	Non-exposed Type 非外露形	A	B	C	D	E	F	A	B	C	D	E	A	B	C	D	A	B	C	A	B	C	A	B
STORE RM (INSIDE KITCHEN) 儲物房(廚房內)	13A Socket Outlet 單位電插座		0	0	0	0	0	0	0	0	0	0	0	1	0	0	1	1	0	1	1	0	1	1	1
	Switch for A/C Unit (Wall-mounted) 冷氣機開關制(掛牆式)		0	0	0	0	0	0	0	0	0	0	0	1	0	0	1	1	0	1	1	0	1	1	1
STORE RM (INSIDE MASTER BEDROOM/ INSIDE LIVING/ DINING ROOM) 儲物房(主人睡房內/ 客/飯廳內)	TV/FM Outlet 電視/電台天線插座		0	0	0	0	0	0	0	0	1	0	0	0	0	0	0	0	0	0	1	0	1	0	0
	Telephone Outlet 電話插座		0	0	0	0	0	0	0	0	1	0	0	0	0	0	0	0	0	0	1	0	1	0	0
	13A Socket Outlet 單位電插座		0	0	0	0	0	0	0	0	1	0	0	0	0	0	0	0	0	0	0	0	0	1	1
	13A Twin Socket Outlet 雙位電插座		0	0	0	0	0	0	0	0	0	0	0	0	0	0	0	0	0	0	1	0	1	0	0
	Switch for A/C Unit (Wall-mounted) 冷氣機開關制(掛牆式)		0	0	0	0	0	0	0	0	1	0	0	0	0	0	0	0	0	0	0	0	1	0	0
		Fused Spur Unit/Socket Outlet for Electric Curtain 接線座供電窗簾		0	0	0	0	0	0	0	0	0	0	0	0	0	0	0	0	0	2	0	0	0	0
	Switch for A/C Unit (Duct type) 冷氣機開關制(管道式)		0	0	0	0	0	0	0	0	0	0	0	0	0	0	0	0	0	1	0	0	0	0	
STUDY RM. 書房	TV/FM Outlet 電視/電台天線插座		0	0	0	0	0	1	0	0	0	1	0	0	0	0	0	0	0	0	0	0	0	0	
	Telephone Outlet 電話插座		0	0	0	0	0	1	0	0	0	1	0	0	0	0	0	0	0	0	0	0	0	0	
	13A Twin Socket Outlet 雙位電插座		0	0	0	0	0	1	0	0	0	1	0	0	0	0	0	0	0	0	0	0	0	0	
	Switch for A/C Unit (Wall-mounted) 冷氣機開關制(掛牆式)		0	0	0	0	0	1	0	0	0	1	0	0	0	0	0	0	0	0	0	0	0	0	
		Fused Spur Unit/Socket Outlet for Electric Curtain 接線座供電窗簾		0	0	0	0	0	1	0	0	0	1	0	0	0	0	0	0	0	0	0	0	0	0



# Fittings, Finishes and Appliances

## 裝置、裝修物料及設備

### Mechanical & electrical provisions plan 機電裝置平面圖



6/F Floor Plan  
6樓平面圖

SCALE 比例尺: 0 5M(米) 10M(米)

#### MECHANICAL & ELECTRICAL PROVISIONS 機電裝置說明表

⬇	LIGHTING SWITCH	燈掣
⬆	EQUIPMENT SWITCH	設備開關掣
⬆ <sup>C</sup>	CONTROL SWITCH FOR CURTAIN	電動簾開關掣
⌋	13A SOCKET OULET	單位電插座
⌋⌋	13A TWIN SOCKET OUTLET	雙位電插座
USB	USB/HDMI/COMPOSITE VIDEO CONNECTION	USB/HDMI連接點及AV複合端子
⬜	MCB BOARD	總電掣箱
⊙	ELECTRIC BELL PUSH BUTTON	門鈴按鈕
○	LIGHTING POINT	燈位

⊕	DOWN LIGHT LIGHTING POINT	天花燈
⊕	OUTDOOR ELECTRICAL OUTLET	室外電源插座
⊖	LIGHTING FOR U.P./BALCONY	工作平台/露台燈
⊖	LIGHTING FOR BATHROOM	浴室燈
DP	DOOR PHONE	門口對講機
W	WASHING MACHINE DRAIN POINT & WATER POINT	洗衣機去水位和來水位
T	TELEPHONE OUTLET	電話插座
TF	TV/FM OUTLET	電視/電台天線插座
BTV	BATHROOM TV	浴室電視

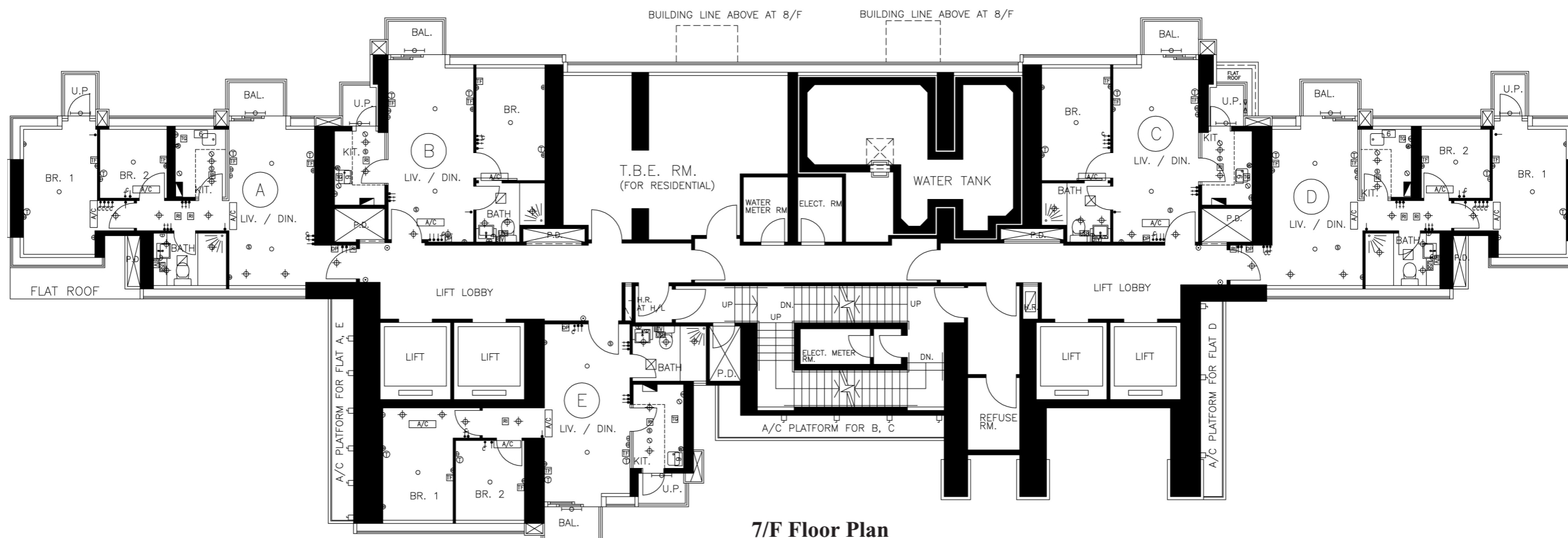
KTV	KITCHEN TV	廚房電視
S	SMOKE DETECTOR	煙霧感應器
⊘	SPRINKLER HEAD	花灑頭
RI	REMOTE INDICATOR FOR FIRE SIGNAL	火警指示燈
A/C	INDOOR AIR CONDITIONER	室內冷氣機
⊘	EXHAUST FAN (WINDOW-TYPE)	窗口式抽氣扇
TG	TOWNGAS METER	煤氣錶位
⊖	ISOLATOR FOR OUTDOOR AIR CONDITIONER	室外冷氣機電掣位
6	6kw ELECTRIC WATER HEATER	6kw 即熱式電熱水爐

Please refer to page 85 of this sales brochure for explanatory note and legend of the terms and abbreviations shown on mechanical & electrical provisions plans.

機電裝置平面圖中顯示之附註及名詞及簡稱請參閱本售樓說明書第85頁。

# Mechanical & electrical provisions plan

## 機電裝置平面圖



**7/F Floor Plan**  
7樓平面圖

SCALE 比例尺: 0 5M(米) 10M(米)

MECHANICAL & ELECTRICAL PROVISIONS 機電裝置說明表

⬇	LIGHTING SWITCH	燈掣
⬆	EQUIPMENT SWITCH	設備開關掣
⬆ <sup>c</sup>	CONTROL SWITCH FOR CURTAIN	電動簾開關掣
⌋	13A SOCKET OULET	單位電插座
⌋	13A TWIN SOCKET OUTLET	雙位電插座
USB	USB/HDMI/COMPOSITE VIDEO CONNECTION	USB/HDMI連接點及AV複合端子
⬛	MCB BOARD	總電掣箱
⊙	ELECTRIC BELL PUSH BUTTON	門鈴按鈕
○	LIGHTING POINT	燈位

⊕	DOWN LIGHT LIGHTING POINT	天花燈
⊕	OUTDOOR ELECTRICAL OUTLET	室外電源插座
⊕	LIGHTING FOR U.P./BALCONY	工作平台/露台燈
⊕	LIGHTING FOR BATHROOM	浴室燈
DP	DOOR PHONE	門口對講機
W	WASHING MACHINE DRAIN POINT & WATER POINT	洗衣機去水位和來水位
T	TELEPHONE OUTLET	電話插座
TF	TV/FM OUTLET	電視/電台天線插座
BT	BATHROOM TV	浴室電視

KTV	KITCHEN TV	廚房電視
S	SMOKE DETECTOR	煙霧感應器
⊙	SPRINKLER HEAD	花灑頭
RI	REMOTE INDICATOR FOR FIRE SIGNAL	火警指示燈
A/C	INDOOR AIR CONDITIONER	室內冷氣機
⊕	EXHAUST FAN (WINDOW-TYPE)	窗口式抽氣扇
TG	TOWNGAS METER	煤氣錶位
⊕	ISOLATOR FOR OUTDOOR AIR CONDITIONER	室外冷氣機電掣位
6	6kw ELECTRIC WATER HEATER	6kw 即熱式電熱水爐

Please refer to page 85 of this sales brochure for explanatory note and legend of the terms and abbreviations shown on mechanical & electrical provisions plans.

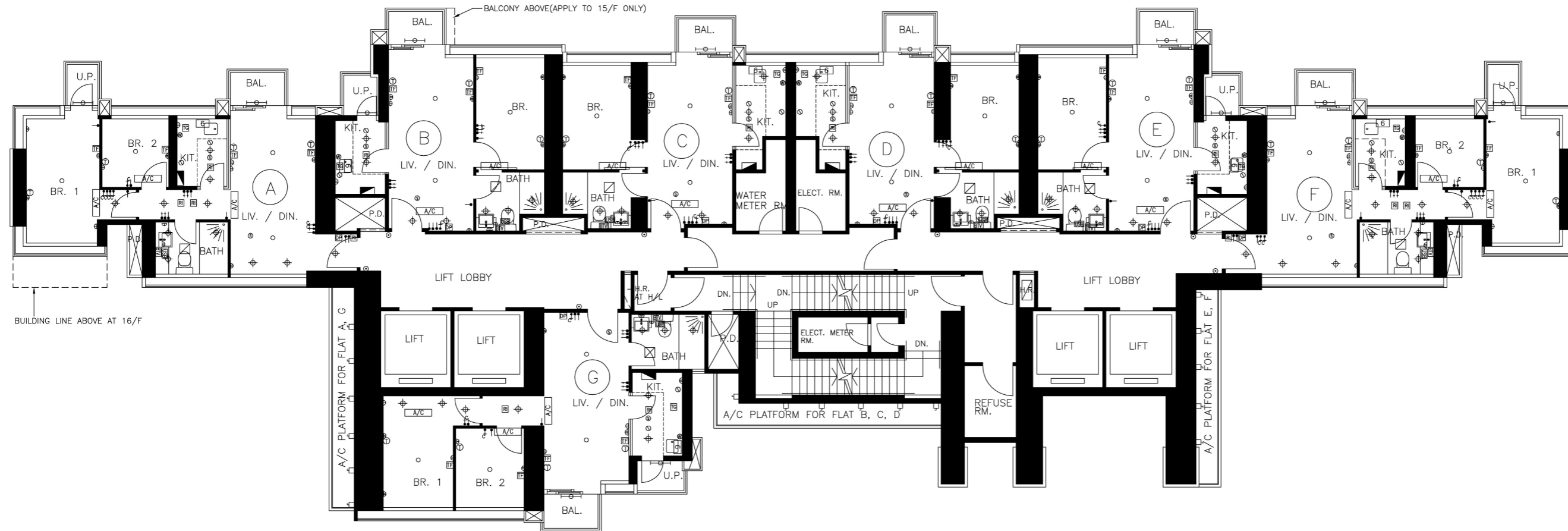
機電裝置平面圖中顯示之附註及名詞及簡稱請參閱本售樓說明書第85頁。

# Fittings, Finishes and Appliances

## 裝置、裝修物料及設備

### Mechanical & electrical provisions plan

#### 機電裝置平面圖



8/F - 12/F & 15/F Floor Plan  
8樓至12樓及15樓平面圖

SCALE 比例尺: 0 5M(米) 10M(米)

#### MECHANICAL & ELECTRICAL PROVISIONS 機電裝置說明表

⬇	LIGHTING SWITCH	燈掣
⬆	EQUIPMENT SWITCH	設備開關掣
⬆ <sup>c</sup>	CONTROL SWITCH FOR CURTAIN	電動簾開關掣
⌏	13A SOCKET OULET	單位電插座
⌏	13A TWIN SOCKET OUTLET	雙位電插座
USB	USB/HDMI/COMPOSITE VIDEO CONNECTION	USB/HDMI連接點及AV複合端子
⬜	MCB BOARD	總電掣箱
⊙	ELECTRIC BELL PUSH BUTTON	門鈴按鈕
○	LIGHTING POINT	燈位

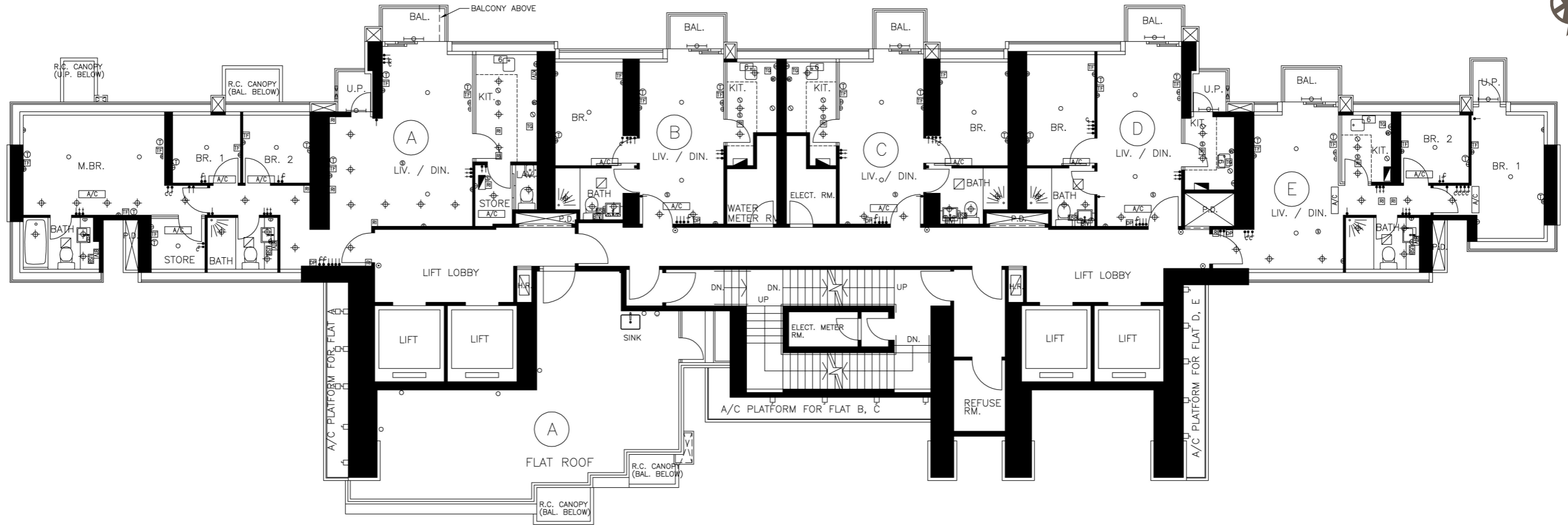
⊕	DOWN LIGHT LIGHTING POINT	天花燈
⊕	OUTDOOR ELECTRICAL OUTLET	室外電源插座
⊕	LIGHTING FOR U.P./BALCONY	工作平台/露台燈
⊕	LIGHTING FOR BATHROOM	浴室燈
DP	DOOR PHONE	門口對講機
W	WASHING MACHINE DRAIN POINT & WATER POINT	洗衣機去水位和來水位
Ⓣ	TELEPHONE OUTLET	電話插座
TF	TV/FM OUTLET	電視/電台天線插座
BTV	BATHROOM TV	浴室電視

KTV	KITCHEN TV	廚房電視
S	SMOKE DETECTOR	煙霧感應器
⊗	SPRINKLER HEAD	花灑頭
RI	REMOTE INDICATOR FOR FIRE SIGNAL	火警指示燈
A/C	INDOOR AIR CONDITIONER	室內冷氣機
⊕	EXHAUST FAN (WINDOW-TYPE)	窗口式抽氣扇
TG	TOWNGAS METER	煤氣錶位
⊕	ISOLATOR FOR OUTDOOR AIR CONDITIONER	室外冷氣機電掣位
6	6kw ELECTRIC WATER HEATER	6kw 即熱式電熱水爐

Please refer to page 85 of this sales brochure for explanatory note and legend of the terms and abbreviations shown on mechanical & electrical provisions plans.

機電裝置平面圖中顯示之附註及名詞及簡稱請參閱本售樓說明書第85頁。

## Mechanical & electrical provisions plan 機電裝置平面圖



16/F Floor Plan  
16樓平面圖

SCALE 比例尺: 0 5M(米) 10M(米)

### MECHANICAL & ELECTRICAL PROVISIONS 機電裝置說明表

	LIGHTING SWITCH	燈掣
	EQUIPMENT SWITCH	設備開關掣
	CONTROL SWITCH FOR CURTAIN	電動簾開關掣
	13A SOCKET OULET	單位電插座
	13A TWIN SOCKET OUTLET	雙位電插座
	USB/HDMI/COMPOSITE VIDEO CONNECTION	USB/HDMI連接點及AV複合端子
	MCB BOARD	總電掣箱
	ELECTRIC BELL PUSH BUTTON	門鈴按鈕
	LIGHTING POINT	燈位

	DOWN LIGHT LIGHTING POINT	天花燈
	OUTDOOR ELECTRICAL OUTLET	室外電源插座
	LIGHTING FOR U.P./BALCONY	工作平台/露台燈
	LIGHTING FOR BATHROOM	浴室燈
	DOOR PHONE	門口對講機
	WASHING MACHINE DRAIN POINT & WATER POINT	洗衣機去水位和來水位
	TELEPHONE OUTLET	電話插座
	TV/FM OUTLET	電視/電台天線插座
	BATHROOM TV	浴室電視

	KITCHEN TV	廚房電視
	SMOKE DETECTOR	煙霧感應器
	SPRINKLER HEAD	花灑頭
	REMOTE INDICATOR FOR FIRE SIGNAL	火警指示燈
	INDOOR AIR CONDITIONER	室內冷氣機
	EXHAUST FAN (WINDOW-TYPE)	窗口式抽氣扇
	TOWNGAS METER	煤氣錶位
	ISOLATOR FOR OUTDOOR AIR CONDITIONER	室外冷氣機電掣位
	6kw ELECTRIC WATER HEATER	6kw 即熱式電熱水爐

Please refer to page 85 of this sales brochure for explanatory note and legend of the terms and abbreviations shown on mechanical & electrical provisions plans.

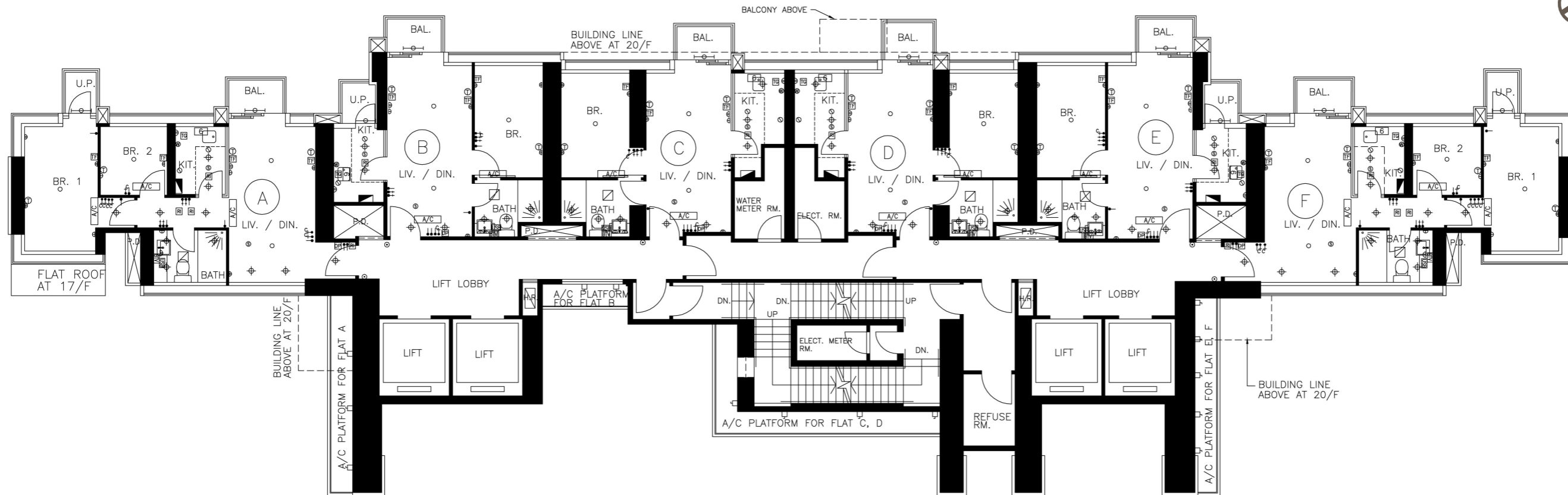
機電裝置平面圖中顯示之附註及名詞及簡稱請參閱本售樓說明書第85頁。

# Fittings, Finishes and Appliances

## 裝置、裝修物料及設備

### Mechanical & electrical provisions plan

#### 機電裝置平面圖



17/F - 18/F Floor Plan  
17樓至18樓平面圖

SCALE 比例尺: 0 5M(米) 10M(米)

#### MECHANICAL & ELECTRICAL PROVISIONS 機電裝置說明表

⬇	LIGHTING SWITCH	燈掣
⬆	EQUIPMENT SWITCH	設備開關掣
⬆ <sup>c</sup>	CONTROL SWITCH FOR CURTAIN	電動簾開關掣
⌏	13A SOCKET OULET	單位電插座
⌏	13A TWIN SOCKET OUTLET	雙位電插座
USB	USB/HDMI/COMPOSITE VIDEO CONNECTION	USB/HDMI連接點及AV複合端子
⬜	MCB BOARD	總電掣箱
⊙	ELECTRIC BELL PUSH BUTTON	門鈴按鈕
○	LIGHTING POINT	燈位

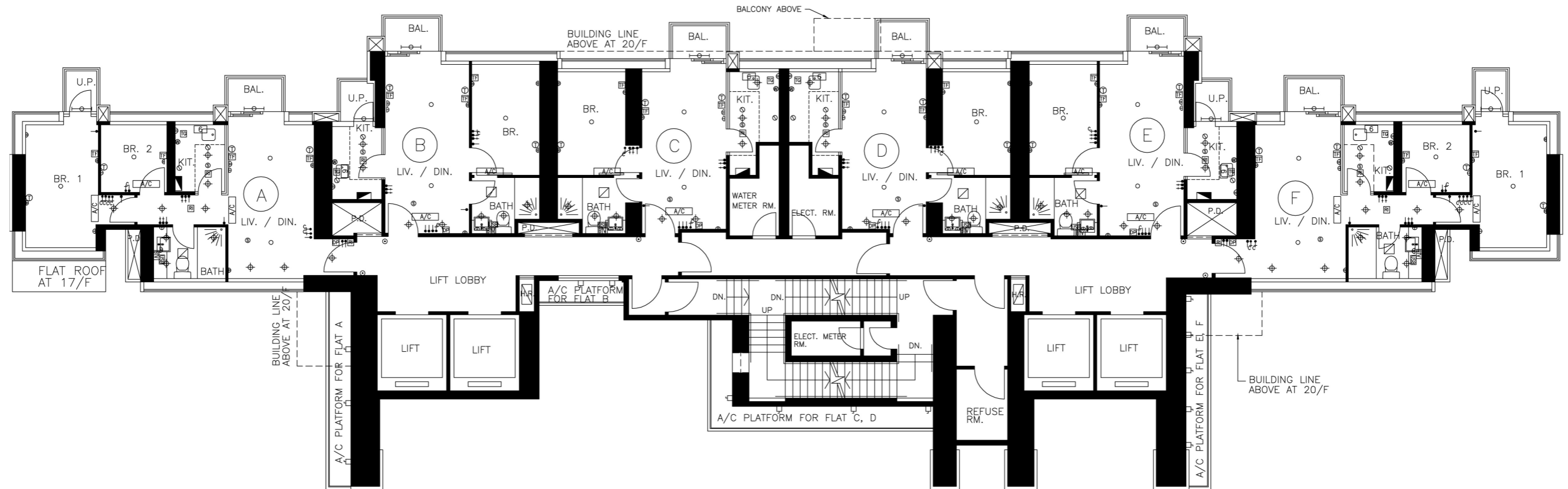
⊕	DOWN LIGHT LIGHTING POINT	天花燈
⊕	OUTDOOR ELECTRICAL OUTLET	室外電源插座
⊕	LIGHTING FOR U.P./BALCONY	工作平台/露台燈
⊕	LIGHTING FOR BATHROOM	浴室燈
DP	DOOR PHONE	門口對講機
W	WASHING MACHINE DRAIN POINT & WATER POINT	洗衣機去水位和來水位
Ⓣ	TELEPHONE OUTLET	電話插座
TF	TV/FM OUTLET	電視/電台天線插座
BTV	BATHROOM TV	浴室電視

KTV	KITCHEN TV	廚房電視
S	SMOKE DETECTOR	煙霧感應器
⊘	SPRINKLER HEAD	花灑頭
RI	REMOTE INDICATOR FOR FIRE SIGNAL	火警指示燈
A/C	INDOOR AIR CONDITIONER	室內冷氣機
⊕	EXHAUST FAN (WINDOW-TYPE)	窗口式抽氣扇
TG	TOWNGAS METER	煤氣錶位
⊕	ISOLATOR FOR OUTDOOR AIR CONDITIONER	室外冷氣機電掣位
6	6kw ELECTRIC WATER HEATER	6kw 即熱式電熱水爐

Please refer to page 85 of this sales brochure for explanatory note and legend of the terms and abbreviations shown on mechanical & electrical provisions plans.

機電裝置平面圖中顯示之附註及名詞及簡稱請參閱本售樓說明書第85頁。

## Mechanical & electrical provisions plan 機電裝置平面圖



19/F Floor Plan  
19樓平面圖

SCALE 比例尺: 0 5M(米) 10M(米)

### MECHANICAL & ELECTRICAL PROVISIONS 機電裝置說明表

⬇	LIGHTING SWITCH	燈掣
⬆	EQUIPMENT SWITCH	設備開關掣
⬆ <sup>c</sup>	CONTROL SWITCH FOR CURTAIN	電動簾開關掣
⌋	13A SOCKET OULET	單位電插座
⌋⌋	13A TWIN SOCKET OUTLET	雙位電插座
USB	USB/HDMI/COMPOSITE VIDEO CONNECTION	USB/HDMI連接點及AV複合端子
⬛	MCB BOARD	總電掣箱
⊙	ELECTRIC BELL PUSH BUTTON	門鈴按鈕
○	LIGHTING POINT	燈位

⊕	DOWN LIGHT LIGHTING POINT	天花燈
⊕ <sup>o</sup>	OUTDOOR ELECTRICAL OUTLET	室外電源插座
⊕ <sup>o</sup> ⊕ <sup>o</sup>	LIGHTING FOR U.P./BALCONY	工作平台/露台燈
⊕ <sup>o</sup> ⊕ <sup>o</sup> ⊕ <sup>o</sup>	LIGHTING FOR BATHROOM	浴室燈
DP	DOOR PHONE	門口對講機
W	WASHING MACHINE DRAIN POINT & WATER POINT	洗衣機去水位和來水位
T	TELEPHONE OUTLET	電話插座
TF	TV/FM OUTLET	電視/電台天線插座
BT	BATHROOM TV	浴室電視

KTV	KITCHEN TV	廚房電視
S	SMOKE DETECTOR	煙霧感應器
⊙	SPRINKLER HEAD	花灑頭
RI	REMOTE INDICATOR FOR FIRE SIGNAL	火警指示燈
A/C	INDOOR AIR CONDITIONER	室內冷氣機
⊕	EXHAUST FAN (WINDOW-TYPE)	窗口式抽氣扇
TG	TOWNGAS METER	煤氣錶位
⊕	ISOLATOR FOR OUTDOOR AIR CONDITIONER	室外冷氣機電掣位
6	6kw ELECTRIC WATER HEATER	6kw 即熱式電熱水爐

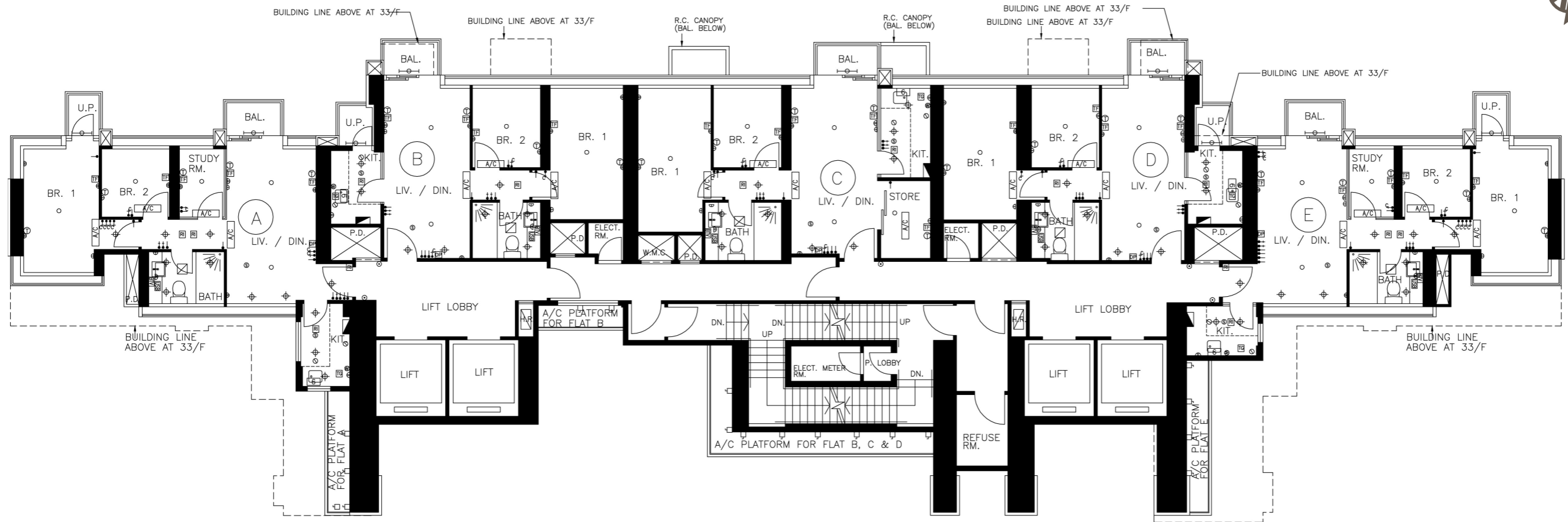
Please refer to page 85 of this sales brochure for explanatory note and legend of the terms and abbreviations shown on mechanical & electrical provisions plans.

機電裝置平面圖中顯示之附註及名詞及簡稱請參閱本售樓說明書第85頁。

# Fittings, Finishes and Appliances

## 裝置、裝修物料及設備

### Mechanical & electrical provisions plan 機電裝置平面圖



20/F - 23/F & 25/F - 31/F Floor Plan  
20樓至23樓及25樓至31樓平面圖

SCALE 比例尺: 0 5M(米) 10M(米)

#### MECHANICAL & ELECTRICAL PROVISIONS 機電裝置說明表

⬇	LIGHTING SWITCH	燈掣
⬆	EQUIPMENT SWITCH	設備開關掣
⬆ <sup>C</sup>	CONTROL SWITCH FOR CURTAIN	電動簾開關掣
⌏	13A SOCKET OULET	單位電插座
⌏	13A TWIN SOCKET OUTLET	雙位電插座
USB	USB/HDMI/COMPOSITE VIDEO CONNECTION	USB/HDMI連接點及AV複合端子
⬜	MCB BOARD	總電掣箱
⊙	ELECTRIC BELL PUSH BUTTON	門鈴按鈕
○	LIGHTING POINT	燈位

⊕	DOWN LIGHT LIGHTING POINT	天花燈
⊕	OUTDOOR ELECTRICAL OUTLET	室外電源插座
⊕	LIGHTING FOR U.P./BALCONY	工作平台/露台燈
⊕	LIGHTING FOR BATHROOM	浴室燈
DP	DOOR PHONE	門口對講機
W	WASHING MACHINE DRAIN POINT & WATER POINT	洗衣機去水位和來水位
Ⓣ	TELEPHONE OUTLET	電話插座
TF	TV/FM OUTLET	電視/電台天線插座
BTV	BATHROOM TV	浴室電視

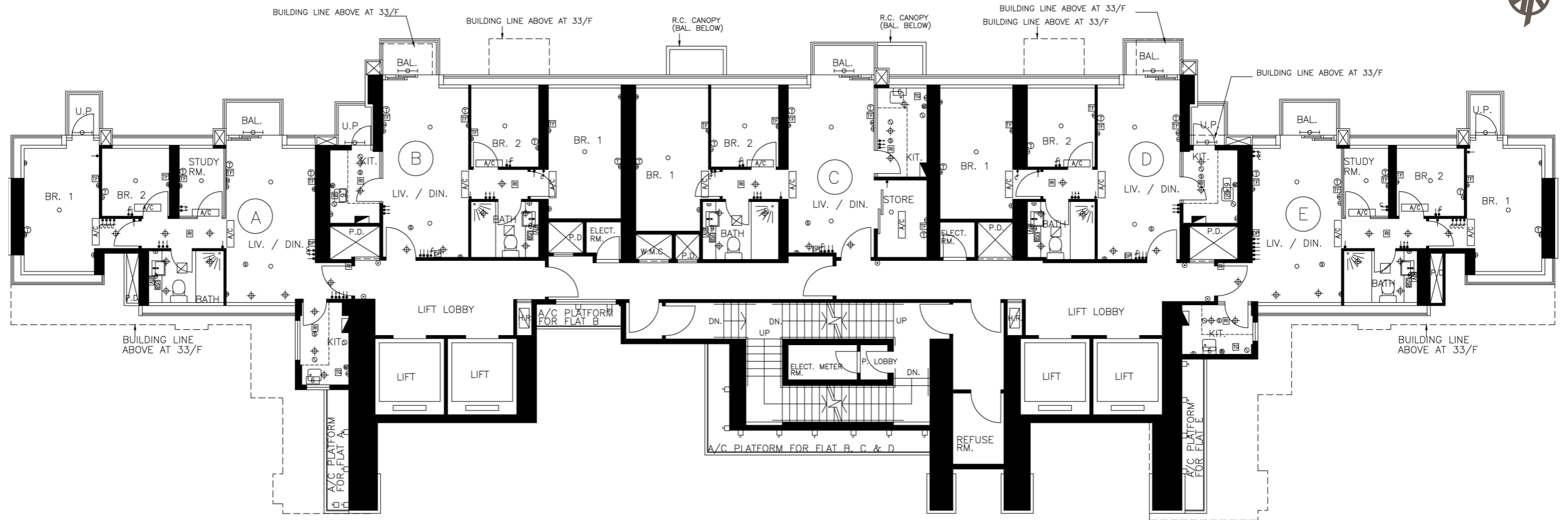
KTV	KITCHEN TV	廚房電視
S	SMOKE DETECTOR	煙霧感應器
⊘	SPRINKLER HEAD	花灑頭
RI	REMOTE INDICATOR FOR FIRE SIGNAL	火警指示燈
A/C	INDOOR AIR CONDITIONER	室內冷氣機
⊕	EXHAUST FAN (WINDOW-TYPE)	窗口式抽氣扇
TG	TOWNGAS METER	煤氣錶位
⊕	ISOLATOR FOR OUTDOOR AIR CONDITIONER	室外冷氣機電掣位
6	6kw ELECTRIC WATER HEATER	6kw 即熱式電熱水爐

Please refer to page 85 of this sales brochure for explanatory note and legend of the terms and abbreviations shown on mechanical & electrical provisions plans.

機電裝置平面圖中顯示之附註及名詞及簡稱請參閱本售樓說明書第85頁。

# Mechanical & electrical provisions plan

## 機電裝置平面圖



32/F Floor Plan  
32樓平面圖

SCALE 比例尺: 0 5M(米) 10M(米)

### MECHANICAL & ELECTRICAL PROVISIONS 機電裝置說明表

	LIGHTING SWITCH	燈掣
	EQUIPMENT SWITCH	設備開關掣
	CONTROL SWITCH FOR CURTAIN	電動簾開關掣
	13A SOCKET OULET	單位電插座
	13A TWIN SOCKET OUTLET	雙位電插座
	USB/HDMI/COMPOSITE VIDEO CONNECTION	USB/HDMI連接點及AV複合端子
	MCB BOARD	總電掣箱
	ELECTRIC BELL PUSH BUTTON	門鈴按鈕
	LIGHTING POINT	燈位

	DOWN LIGHT LIGHTING POINT	天花燈
	OUTDOOR ELECTRICAL OUTLET	室外電源插座
	LIGHTING FOR U.P./BALCONY	工作平台/露台燈
	LIGHTING FOR BATHROOM	浴室燈
	DOOR PHONE	門口對講機
	WASHING MACHINE DRAIN POINT & WATER POINT	洗衣機去水位和來水位
	TELEPHONE OUTLET	電話插座
	TV/FM OUTLET	電視/電台天線插座
	BATHROOM TV	浴室電視

	KITCHEN TV	廚房電視
	SMOKE DETECTOR	煙霧感應器
	SPRINKLER HEAD	花灑頭
	REMOTE INDICATOR FOR FIRE SIGNAL	火警指示燈
	INDOOR AIR CONDITIONER	室內冷氣機
	EXHAUST FAN (WINDOW-TYPE)	窗口式抽氣扇
	TOWNGAS METER	煤氣錶位
	ISOLATOR FOR OUTDOOR AIR CONDITIONER	室外冷氣機電掣位
	6kw ELECTRIC WATER HEATER	6kw 即熱式電熱水爐

Please refer to page 85 of this sales brochure for explanatory note and legend of the terms and abbreviations shown on mechanical & electrical provisions plans.

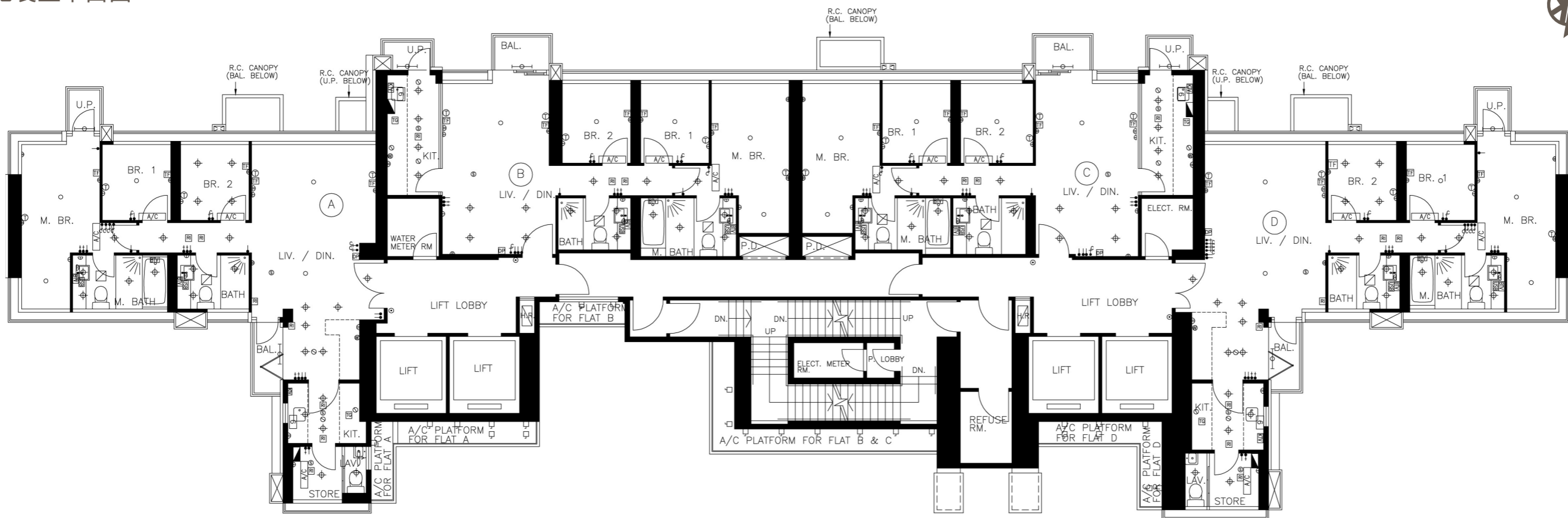
機電裝置平面圖中顯示之附註及名詞及簡稱請參閱本售樓說明書第85頁。



# Fittings, Finishes and Appliances

## 裝置、裝修物料及設備

### Mechanical & electrical provisions plan 機電裝置平面圖



33/F & 35/F - 38/F Floor Plan  
33樓及35樓至38樓平面圖

SCALE 比例尺: 0 5M(米) 10M(米)

#### MECHANICAL & ELECTRICAL PROVISIONS 機電裝置說明表

⬇	LIGHTING SWITCH	燈掣
⬆	EQUIPMENT SWITCH	設備開關掣
⬆ <sup>c</sup>	CONTROL SWITCH FOR CURTAIN	電動簾開關掣
⌋	13A SOCKET OULET	單位電插座
⌋	13A TWIN SOCKET OUTLET	雙位電插座
USB	USB/HDMI/COMPOSITE VIDEO CONNECTION	USB/HDMI連接點及AV複合端子
⬜	MCB BOARD	總電掣箱
⊙	ELECTRIC BELL PUSH BUTTON	門鈴按鈕
○	LIGHTING POINT	燈位

⊕	DOWN LIGHT LIGHTING POINT	天花燈
⊕	OUTDOOR ELECTRICAL OUTLET	室外電源插座
⊕	LIGHTING FOR U.P./BALCONY	工作平台/露台燈
⊕	LIGHTING FOR BATHROOM	浴室燈
DP	DOOR PHONE	門口對講機
W	WASHING MACHINE DRAIN POINT & WATER POINT	洗衣機去水位和來水位
Ⓣ	TELEPHONE OUTLET	電話插座
TF	TV/FM OUTLET	電視/電台天線插座
BTV	BATHROOM TV	浴室電視

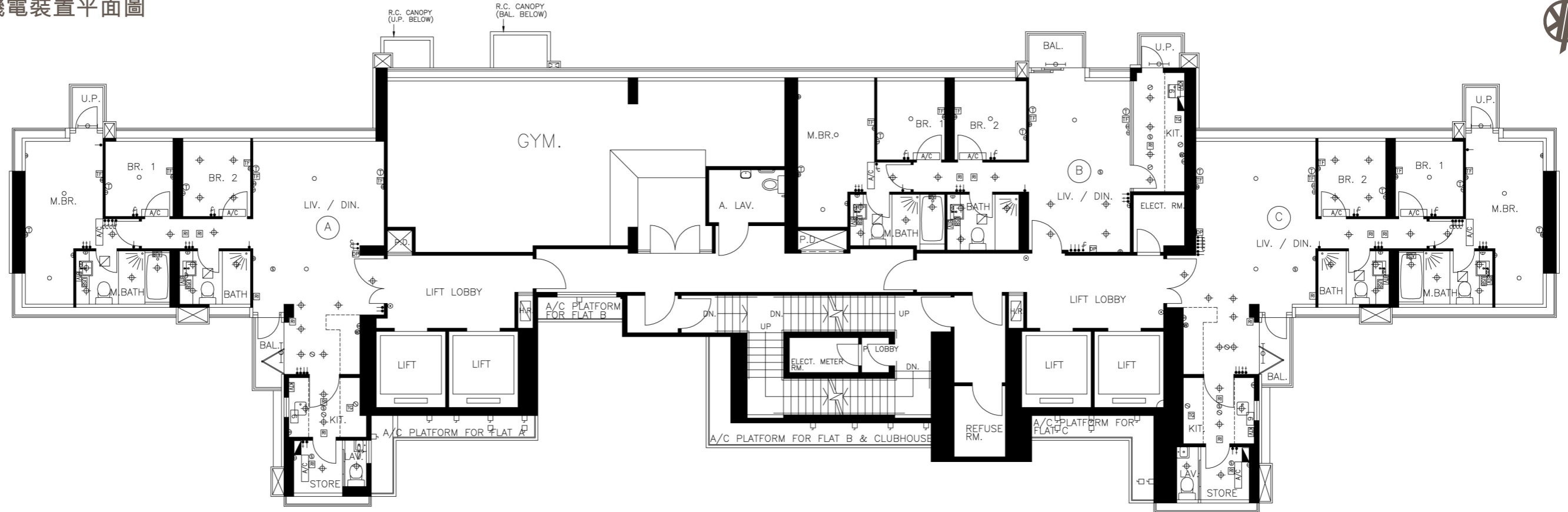
KTV	KITCHEN TV	廚房電視
S	SMOKE DETECTOR	煙霧感應器
⊗	SPRINKLER HEAD	花灑頭
RI	REMOTE INDICATOR FOR FIRE SIGNAL	火警指示燈
A/C	INDOOR AIR CONDITIONER	室內冷氣機
⊕	EXHAUST FAN (WINDOW-TYPE)	窗口式抽氣扇
TG	TOWNGAS METER	煤氣錶位
⊕	ISOLATOR FOR OUTDOOR AIR CONDITIONER	室外冷氣機電掣位
6	6kw ELECTRIC WATER HEATER	6kw 即熱式電熱水爐

Please refer to page 85 of this sales brochure for explanatory note and legend of the terms and abbreviations shown on mechanical & electrical provisions plans.

機電裝置平面圖中顯示之附註及名詞及簡稱請參閱本售樓說明書第85頁。

# Mechanical & electrical provisions plan

## 機電裝置平面圖



**39/F Floor Plan**  
39樓平面圖

SCALE 比例尺: 0 5M(米) 10M(米)

MECHANICAL & ELECTRICAL PROVISIONS 機電裝置說明表

⬇	LIGHTING SWITCH	燈掣
⬆	EQUIPMENT SWITCH	設備開關掣
⬆ <sup>c</sup>	CONTROL SWITCH FOR CURTAIN	電動簾開關掣
⌋	13A SOCKET OULET	單位電插座
⌋⌋	13A TWIN SOCKET OUTLET	雙位電插座
USB	USB/HDMI/COMPOSITE VIDEO CONNECTION	USB/HDMI連接點及AV複合端子
⬜	MCB BOARD	總電掣箱
⊙	ELECTRIC BELL PUSH BUTTON	門鈴按鈕
○	LIGHTING POINT	燈位

⊕	DOWN LIGHT LIGHTING POINT	天花燈
⊕	OUTDOOR ELECTRICAL OUTLET	室外電源插座
⊕	LIGHTING FOR U.P./BALCONY	工作平台/露台燈
⊕	LIGHTING FOR BATHROOM	浴室燈
DP	DOOR PHONE	門口對講機
W	WASHING MACHINE DRAIN POINT & WATER POINT	洗衣機去水位和來水位
T	TELEPHONE OUTLET	電話插座
TF	TV/FM OUTLET	電視/電台天線插座
BT	BATHROOM TV	浴室電視

KTV	KITCHEN TV	廚房電視
S	SMOKE DETECTOR	煙霧感應器
⊙	SPRINKLER HEAD	花灑頭
RI	REMOTE INDICATOR FOR FIRE SIGNAL	火警指示燈
A/C	INDOOR AIR CONDITIONER	室內冷氣機
⊕	EXHAUST FAN (WINDOW-TYPE)	窗口式抽氣扇
TG	TOWNGAS METER	煤氣錶位
⊕	ISOLATOR FOR OUTDOOR AIR CONDITIONER	室外冷氣機電掣位
6	6kw ELECTRIC WATER HEATER	6kw 即熱式電熱水爐

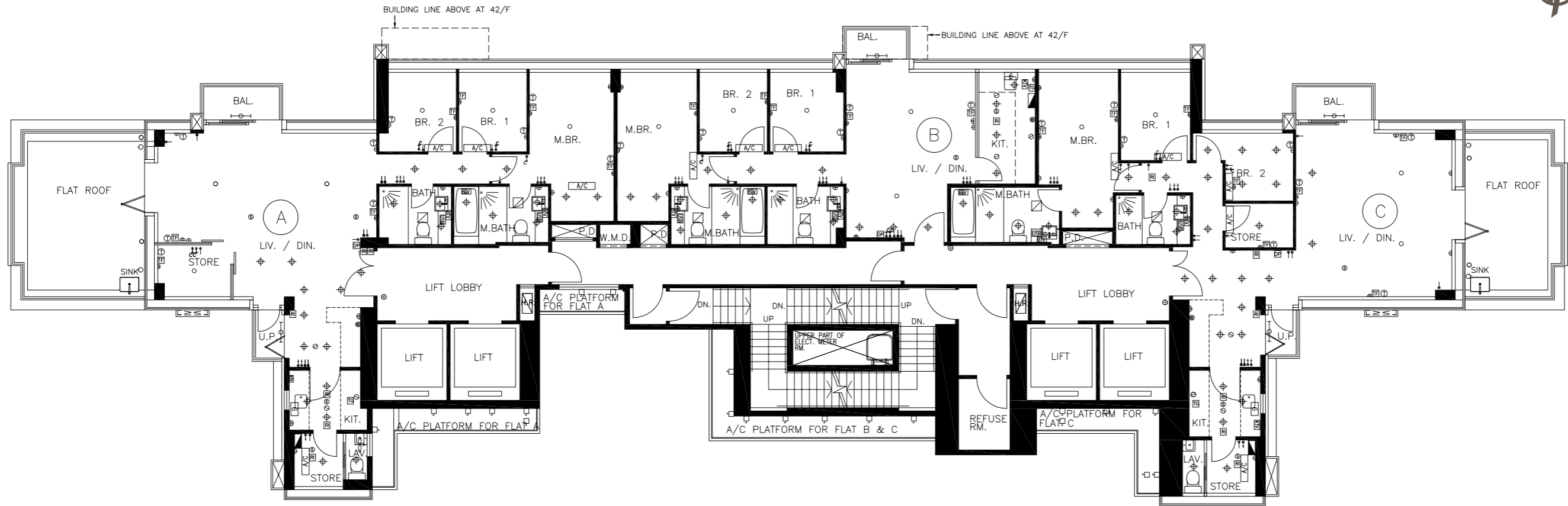
Please refer to page 85 of this sales brochure for explanatory note and legend of the terms and abbreviations shown on mechanical & electrical provisions plans.

機電裝置平面圖中顯示之附註及名詞及簡稱請參閱本售樓說明書第85頁。

# Fittings, Finishes and Appliances

## 裝置、裝修物料及設備

### Mechanical & electrical provisions plan 機電裝置平面圖



41/F Floor Plan  
41樓平面圖

SCALE 比例尺: 0 5M(米) 10M(米)

#### MECHANICAL & ELECTRICAL PROVISIONS 機電裝置說明表

⬇	LIGHTING SWITCH	燈掣
⬆	EQUIPMENT SWITCH	設備開關掣
⬆ <sup>c</sup>	CONTROL SWITCH FOR CURTAIN	電動簾開關掣
⌋	13A SOCKET OULET	單位電插座
⌋	13A TWIN SOCKET OUTLET	雙位電插座
USB	USB/HDMI/COMPOSITE VIDEO CONNECTION	USB/HDMI連接點及AV複合端子
⬛	MCB BOARD	總電掣箱
⊙	ELECTRIC BELL PUSH BUTTON	門鈴按鈕
○	LIGHTING POINT	燈位

⊕	DOWN LIGHT LIGHTING POINT	天花燈
⊕	OUTDOOR ELECTRICAL OUTLET	室外電源插座
⊕	LIGHTING FOR U.P./BALCONY	工作平台/露台燈
⊕	LIGHTING FOR BATHROOM	浴室燈
DP	DOOR PHONE	門口對講機
W	WASHING MACHINE DRAIN POINT & WATER POINT	洗衣機去水位和來水位
Ⓣ	TELEPHONE OUTLET	電話插座
TF	TV/FM OUTLET	電視/電台天線插座
BTV	BATHROOM TV	浴室電視

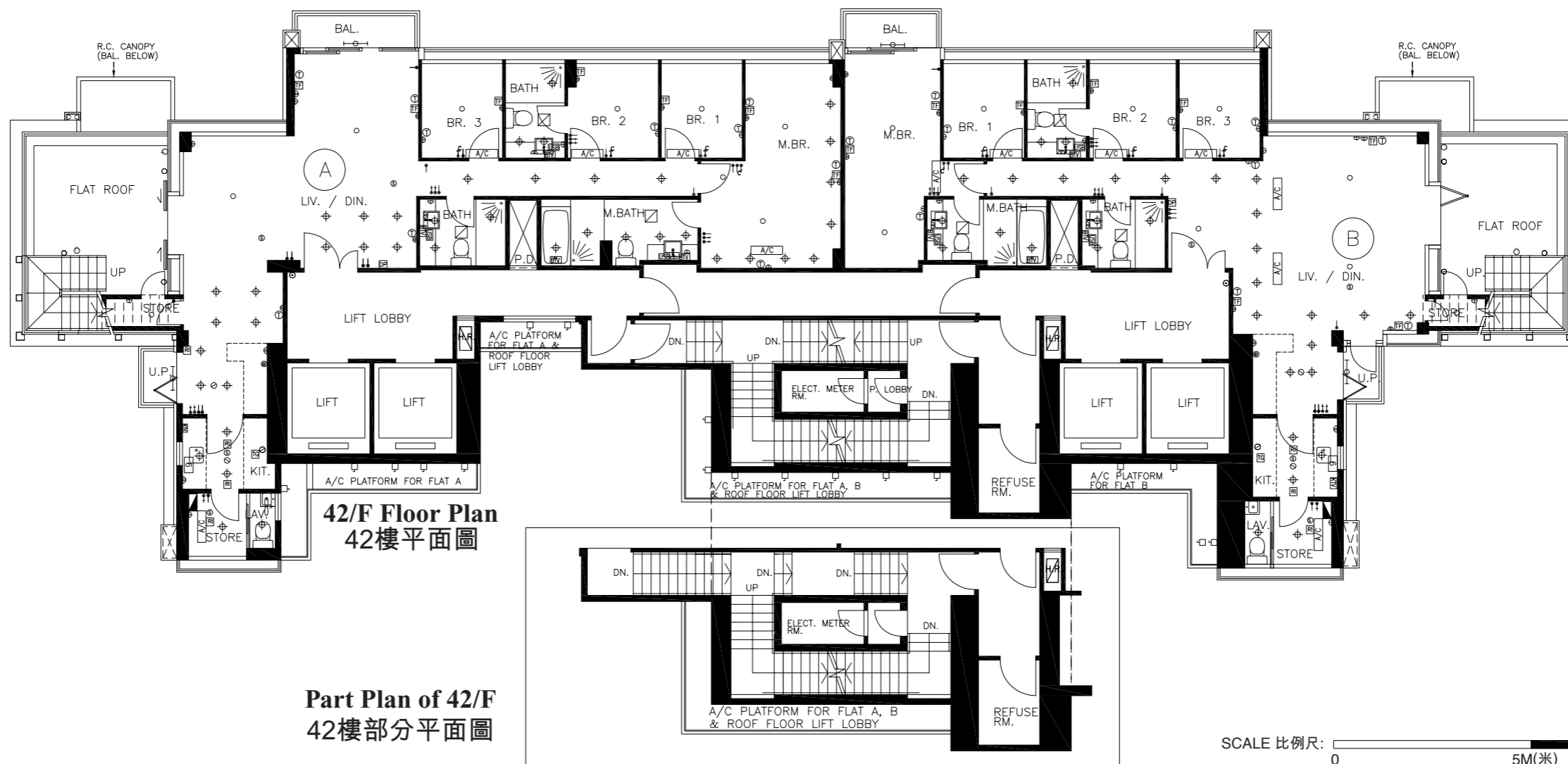
KTV	KITCHEN TV	廚房電視
S	SMOKE DETECTOR	煙霧感應器
⊘	SPRINKLER HEAD	花灑頭
RI	REMOTE INDICATOR FOR FIRE SIGNAL	火警指示燈
A/C	INDOOR AIR CONDITIONER	室內冷氣機
⊕	EXHAUST FAN (WINDOW-TYPE)	窗口式抽氣扇
TG	TOWNGAS METER	煤氣錶位
⊕	ISOLATOR FOR OUTDOOR AIR CONDITIONER	室外冷氣機電掣位
6	6kw ELECTRIC WATER HEATER	6kw 即熱式電熱水爐

Please refer to page 85 of this sales brochure for explanatory note and legend of the terms and abbreviations shown on mechanical & electrical provisions plans.

機電裝置平面圖中顯示之附註及名詞及簡稱請參閱本售樓說明書第85頁。

# Mechanical & electrical provisions plan

## 機電裝置平面圖



**42/F Floor Plan**  
42樓平面圖

**Part Plan of 42/F**  
42樓部分平面圖

### MECHANICAL & ELECTRICAL PROVISIONS 機電裝置說明表

⬇	LIGHTING SWITCH	燈掣
⬆	EQUIPMENT SWITCH	設備開關掣
⬆ <sup>c</sup>	CONTROL SWITCH FOR CURTAIN	電動簾開關掣
⌋	13A SOCKET OULET	單位電插座
⌋⌋	13A TWIN SOCKET OUTLET	雙位電插座
USB	USB/HDMI/COMPOSITE VIDEO CONNECTION	USB/HDMI連接點及AV複合端子
⬛	MCB BOARD	總電掣箱
⊙	ELECTRIC BELL PUSH BUTTON	門鈴按鈕
○	LIGHTING POINT	燈位

⊕	DOWN LIGHT LIGHTING POINT	天花燈
⊕	OUTDOOR ELECTRICAL OUTLET	室外電源插座
⊕	LIGHTING FOR U.P./BALCONY	工作平台/露台燈
⊕	LIGHTING FOR BATHROOM	浴室燈
DP	DOOR PHONE	門口對講機
W	WASHING MACHINE DRAIN POINT & WATER POINT	洗衣機去水位和來水位
T	TELEPHONE OUTLET	電話插座
TF	TV/FM OUTLET	電視/電台天線插座
BTV	BATHROOM TV	浴室電視

KTV	KITCHEN TV	廚房電視
S	SMOKE DETECTOR	煙霧感應器
⊙	SPRINKLER HEAD	花灑頭
RI	REMOTE INDICATOR FOR FIRE SIGNAL	火警指示燈
A/C	INDOOR AIR CONDITIONER	室內冷氣機
⊕	EXHAUST FAN (WINDOW-TYPE)	窗口式抽氣扇
TG	TOWNGAS METER	煤氣錶位
⊕	ISOLATOR FOR OUTDOOR AIR CONDITIONER	室外冷氣機電掣位
6	6kw ELECTRIC WATER HEATER	6kw 即熱式電熱水爐

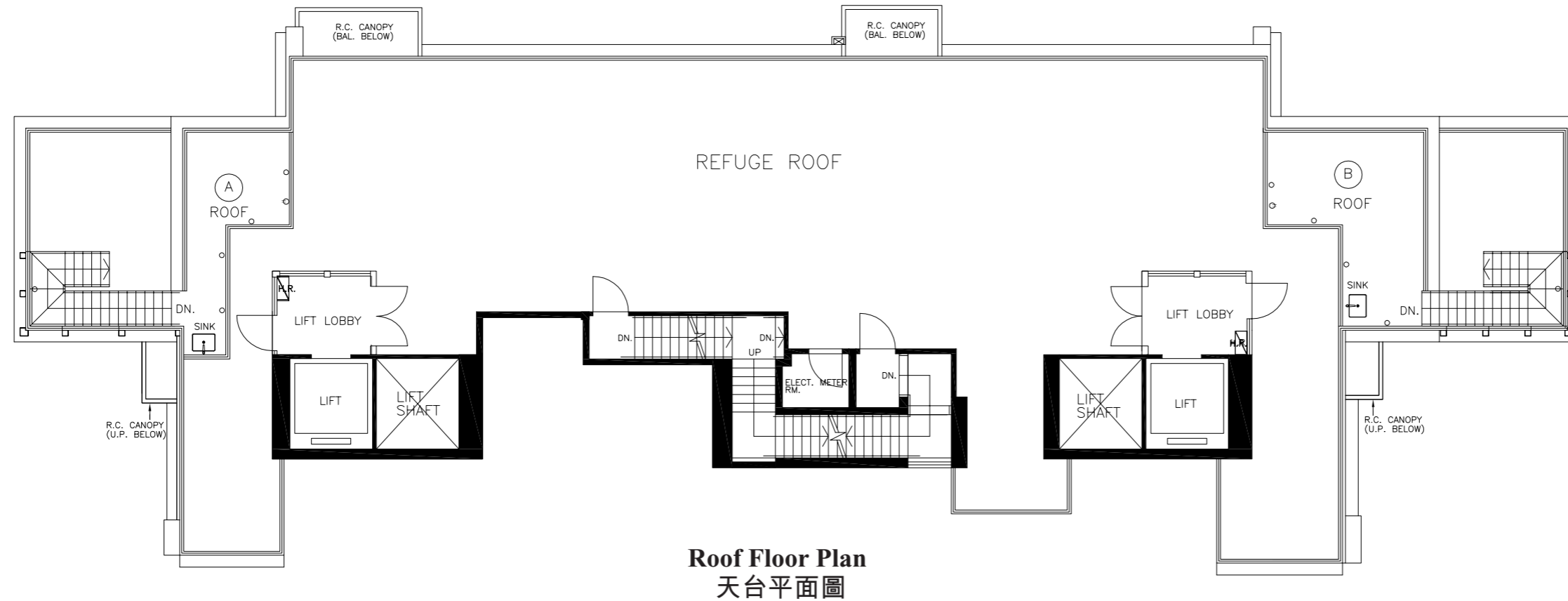
Please refer to page 85 of this sales brochure for explanatory note and legend of the terms and abbreviations shown on mechanical & electrical provisions plans.

機電裝置平面圖中顯示之附註及名詞及簡稱請參閱本售樓說明書第85頁。

# Fittings, Finishes and Appliances

## 裝置、裝修物料及設備

### Mechanical & electrical provisions plan 機電裝置平面圖



**Roof Floor Plan**  
天台平面圖

SCALE 比例尺: 0 5M(米) 10M(米)

#### MECHANICAL & ELECTRICAL PROVISIONS 機電裝置說明表

⬇	LIGHTING SWITCH	燈掣
⬆	EQUIPMENT SWITCH	設備開關掣
⬆ <sup>c</sup>	CONTROL SWITCH FOR CURTAIN	電動簾開關掣
⌏	13A SOCKET OULET	單位電插座
⌏	13A TWIN SOCKET OUTLET	雙位電插座
USB	USB/HDMI/COMPOSITE VIDEO CONNECTION	USB/HDMI連接點及AV複合端子
■	MCB BOARD	總電掣箱
⊙	ELECTRIC BELL PUSH BUTTON	門鈴按鈕
○	LIGHTING POINT	燈位

⊕	DOWN LIGHT LIGHTING POINT	天花燈
⏻	OUTDOOR ELECTRICAL OUTLET	室外電源插座
⌏	LIGHTING FOR U.P./BALCONY	工作平台/露台燈
⌏	LIGHTING FOR BATHROOM	浴室燈
DP	DOOR PHONE	門口對講機
W	WASHING MACHINE DRAIN POINT & WATER POINT	洗衣機去水位和來水位
Ⓣ	TELEPHONE OUTLET	電話插座
TF	TV/FM OUTLET	電視/電台天線插座
BTV	BATHROOM TV	浴室電視

KTV	KITCHEN TV	廚房電視
S	SMOKE DETECTOR	煙霧感應器
⊘	SPRINKLER HEAD	花灑頭
RI	REMOTE INDICATOR FOR FIRE SIGNAL	火警指示燈
A/C	INDOOR AIR CONDITIONER	室內冷氣機
⊘	EXHAUST FAN (WINDOW-TYPE)	窗口式抽氣扇
TG	TOWNGAS METER	煤氣錶位
⊏	ISOLATOR FOR OUTDOOR AIR CONDITIONER	室外冷氣機電掣位
6	6kw ELECTRIC WATER HEATER	6kw 即熱式電熱水爐

Please refer to page 85 of this sales brochure for explanatory note and legend of the terms and abbreviations shown on mechanical & electrical provisions plans.

機電裝置平面圖中顯示之附註及名詞及簡稱請參閱本售樓說明書第85頁。

Legend of Terms and Abbreviations used on Mechanical and Electrical Provisions Plans:  
機電裝置平面圖中所使用名詞及簡稱之圖例：

A/C PLATFORM	= AIR CONDITIONING PLATFORM 冷氣機平台	M.BR.	= MASTER BEDROOM 主人睡房
A. LAV.	= ACCESSIBLE LAVATORY 殘疾人士洗手間	P.D.	= PIPE DUCT 管道槽
BAL.	= BALCONY 露台	PLANTER	= 花槽
BAL. ABOVE	= BALCONY ABOVE 露台置上	P.LOBBY	= PUBLIC LOBBY 公共大堂
BAL. BELOW	= BALCONY BELOW 露台置下	R.C. CANOPY (BAL. BELOW)	= RUBBED CONCRETE CANOPY (BALCONY BELOW) 混凝土簷蓬(露台置下)
BATH	= BATHROOM 浴室	R.C. CANOPY (U.P. BELOW)	= RUBBED CONCRETE CANOPY (UTILITY PLATFORM BELOW) 混凝土簷蓬(工作平台置下)
BR.	= BEDROOM 睡房	REFUSE RM.	= REFUSE ROOM 垃圾房
BR. 1	= BEDROOM 1 睡房 1	REFUGE ROOF	= 庇護層
BR. 2	= BEDROOM 2 睡房 2	ROOF	= 天台
BR. 3	= BEDROOM 3 睡房 3	SINK	= 洗滌盆
BUILDING LINE ABOVE	= 建築線置上	STORE	= 儲物房
DN.	= DOWN 落	STUDY RM.	= STUDY ROOM 書房
ELECT. METER RM.	= ELECTRICAL METER ROOM 電錶房	T.B.E. RM. (FOR COMMERCIAL)	= TELECOMMUNICATION BROADCAST EQUIPMENT ROOM (FOR COMMERCIAL) 電訊及廣播設備機房(供商業)
ELECT. RM.	= ELECTRIC ROOM 電力房	T.B.E. RM. (FOR RESIDENTIAL)	= TELECOMMUNICATION BROADCAST EQUIPMENT ROOM (FOR RESIDENTIAL) 電訊及廣播設備機房(供住宅)
FLAT ROOF	= 平台	UP	= 上
F.S. PUMP & TANK RM.	= FIRE SERVICE PUMP & TANK ROOM 消防泵及缸房	U.P.	= UTILITY PLATFORM 工作平台
GYM.	= GYMNASIUM ROOM 健身室	U.P. ABOVE	= UTILITY PLATFORM ABOVE 工作平台置上
H.R.	= HOSE REEL 消防喉轆	U.P. BELOW	= UTILITY PLATFORM BELOW 工作平台置下
H.R. AT H/L	= HOSE REEL AT HIGH LEVEL 於高位之消防喉轆	UPPER PART OF ELECT. METER RM.	= UPPER PART OF ELECTRICAL METER ROOM 電錶房之上部份
KIT.	= KITCHEN 廚房	WATER METER RM	= WATER METER ROOM 水錶房
LAV.	= LAVATORY 洗手間	WATER TANK	= 水缸
LIFT	= 升降機	W.M.C.	= WATER METER CABINET 水錶箱
LIFT LOBBY	= 升降機大堂	W.M.D.	= WATER METER DUCT 水錶槽
LIFT SHAFT	= 升降機槽		
LIV./DIN.	= LIVING/DINING ROOM 客廳/飯廳		
M.BATH	= MASTER BATHROOM 主人房浴室		

Explanatory note:

1. There may be architectural features and/or exposed pipes on external walls of some floors. For details, please refer to the latest approved building plans.
2. Common pipes exposed and/or enclosed in cladding are located at/adjacent to Balcony and/or Flat Roof and/or Utility Platform and/or air-conditioning platform and/or external wall of some units. For details, please refer to the latest approved building plans and/or electrical and mechanical design drawings.
3. There are ceiling bulkheads and/or sunken slab of the above units at Living/Dining Room, Bedrooms, Study Rooms, Stores, corridors and/or Kitchen of some units for the air-conditioning system and/or M&E services.
4. The internal ceiling height within some units may vary due to structural, architectural and/or decoration design variations.

附註:

1. 部份樓層外牆設有建築裝飾及/或外露喉管。詳細資料，請參閱最後批准之圖則。
2. 部份單位的露台及/或平台及/或工作平台及/或冷氣機平台及/或外牆設有外露及/或內藏的公用喉管。詳細資料，請參閱最後批准之圖則及/或機電裝置設計繪圖。
3. 部份單位客/飯廳、睡房、書房、儲物房、走廊及/或廚房之假天花內裝置有冷氣及/或其他機電設備。
4. 部份單位之天花高度將會因應上層單位之結構、建築設計及/或裝修設計上的需要而有差異。

## Service Agreements

### 服務協議

Potable and flushing water is supplied by Water Supplies Department.

Electricity is supplied by The Hongkong Electric Company Limited.

Towngas is supplied by The Hong Kong and China Gas Company Limited.

食水及沖廁水由水務署供應。

電力由香港電燈有限公司供應。

煤氣由香港中華煤氣有限公司供應。

## Government Rent

### 地稅

The Vendor will pay/has paid (as the case may be) all outstanding Government rent in respect of the residential property up to and including the date of the Assignment of the residential property.

賣方將會繳付/已繳付(視情況而定)有關住宅物業之地稅直至包括住宅物業之買賣成交日期。

# Miscellaneous Payments by Purchaser

## 買方的雜項付款

1. On the delivery of the vacant possession of the residential property to the purchaser, the purchaser is liable to reimburse the owner for the deposits for water, electricity and gas.
2. On that delivery, the purchaser is liable to pay to the owner a debris removal fee.

Note:

The purchaser should pay to the manager and not the owner of the Development the deposits for water, electricity and gas and debris removal fee.

1. 在向買方交付住宅物業在空置情況下的管有權時，買方須負責向擁有人補還水、電力及氣體的按金。
2. 在交付時，買方須向擁有人支付清理廢料的費用。

附註：

買方須向發展項目管理人繳付而不須向擁有人繳付水、電力及氣體的按金及清理廢料的費用。



## Defect Liability Warranty Period

### 欠妥之處的保養責任期

Defects liability warranty period for the residential property and the fittings, finishes and appliances as provided in the Agreement for Sale and Purchase is within six (6) months from the date of completion of the sale and purchase.

按買賣合約規定，住宅物業及住宅物業內裝置、裝修物料及設備之欠妥之處的保養責任期為住宅單位之成交日期起計為期六(6)個月內。

### Maintenance of Slopes 斜坡維修

Not Applicable

不適用

### Modification 修訂

No application to the Government for a modification of the Land Grant for this Development has been made.

本發展項目現時並沒有向政府提出申請修訂批地文件。

## Relevant Information

### 有關資料

1. During the regular cleaning and maintenance of the external walls (excluding windows, glass of windows and all vision panels forming part of a residential unit) of the Development arranged by the manager of the Development, the gondola will be operating in the airspace directly above the flat roofs of Flat A, Flat B and Flat C of 6/F and Flat A of 16/F.
2. A construction site at 97 Belcher's Street at the northern part of the Development and situated opposite to the Development (separated by Belcher's Street) (the "Adjacent Site") is owned by various companies related to Sun Hung Kai Properties Limited, one of the holding companies of the Vendor. According to the information available as at the date of printing this sales brochure, the proposed 45-storey development comprises a residential tower on a retail podium which may be completed in 2017. Any works, use, disposal or development from time to time of the Adjacent Site may materially affect the enjoyment of the residential properties in the Development and/or the Development in terms of views, noise and/or other aspects of the surrounding environment.

## Website Address

### 互聯網網站的網址

The website address designated by the Vendor for the Development for purposes of Part 2 of the Residential Properties (First-hand Sales) Ordinance :  
[www.imperialkennedy.com.hk](http://www.imperialkennedy.com.hk)

1. 在發展項目外牆(不包括構成住宅單位一部分的窗戶、窗戶玻璃及所有觀景窗)進行由發展項目的管理人安排的定期清潔和保養期間，吊船會在6樓A、B和C單位及16樓A單位平台對上的上空操作。
2. 位於發展項目北面，以卑路乍街分隔開的卑路乍街97號地盤("鄰近土地")由多間與新鴻基地產發展有限公司(賣方其中一間控權公司)有關連之公司擁有。根據印製本售樓說明書之日所得的資料，該項目為一幢建於商場平台上樓高45層的住宅項目，預計於2017年落成。任何於鄰近土地上不時進行之工程、使用、處理或發展可能對發展項目及/或其內住宅物業之享用，諸如景觀、噪音及/或周邊環境方面，造成重大影響。

賣方為施行《一手住宅物業銷售條例》第2部就發展項目指定的互聯網網站的網址：  
[www.imperialkennedy.com.hk](http://www.imperialkennedy.com.hk)

# Information in Application for Concession on Gross Floor Area of Building

## 申請建築物總樓面面積寬免的資料

### Breakdown of GFA Concessions Obtained for All Features

- Latest information on breakdown of GFA concessions as shown on the general building plans submitted to and approved by the Building Authority (BA) prior to the printing of the sales brochure is tabulated below. Information marked (#) may be based on information provided by the authorized person if the sales brochure is printed prior to submission of the final amendment plans to the BA. The breakdown of GFA concessions may be subject to further changes until final amendment plans are submitted to and approved by the BA prior to the issuance of the occupation permit for the development.

		Area (m <sup>2</sup> )
<b>Disregarded GFA under Building (Planning) Regulations 23(3)(b)</b>		
1.	Carpark and loading/unloading area excluding public transport terminus	Not applicable
2.	<b>Plant rooms and similar services</b>	
2.1	Mandatory feature or essential plant room, area of which is limited by respective Practice Notes for Authorized Persons, Registered Structural Engineers and Registered Geotechnical Engineers (PNAP) or regulation such as lift machine room, telecommunications and broadcasting (TBE) room, refuse storage and material recovery chamber, etc.	190.957
2.2	Mandatory feature or essential plant room, area of which is NOT limited by any PNAP or regulation such as room occupied solely by fire services installations (FSI) and equipment, meter room, transformer room, potable and flushing water tank, etc.	755.325
2.3	Non-mandatory or non-essential plant room such as air-conditioning (A/C) plant room, air handling unit (AHU) room, etc.	128.508
<b>Green Features under Joint Practice Notes 1 and 2</b>		
3.	Balcony	325.454
4.	Wider common corridor and lift lobby	160.008
5.	Communal sky garden	Not applicable
6.	Acoustic fin	Not applicable
7.	Wing wall, wind catcher and funnel	Not applicable
8.	Non-structural prefabricated external wall	58.956
9.	Utility platform	189
10.	Noise barrier	Not applicable
<b>Amenity Features</b>		
11.	Caretaker's quarters, counter, office, store, guard room and lavatory for watchman and management staff and owners' corporation office	Not applicable
12.	Residential recreational facilities including void, plant room, swimming pool filtration plant room, covered walkway, etc. serving solely the recreational facilities	542.253
13.	Covered landscaped and play area	407.234
14.	Horizontal screen/covered walkway and trellis	Not applicable

### 獲寬免總樓面面積的設施分項

- 於印製售樓說明書前呈交予並已獲建築事務監督批准的一般建築圖則上有關總樓面面積寬免的分項的最新資料，請見下表。如印製售樓說明書時尚未呈交最終修訂圖則予建築事務監督，則有(#)號的資料可以由認可人士提供的資料作為基礎。直至最終修訂圖則於發出佔用許可證前呈交予並獲建築事務監督批准前，以下分項資料仍可能有所修改。

		面積(平方米)
<b>根據《建築物(規劃)規例》第23(3)(b)條不計算的總樓面面積</b>		
1.	停車場及上落客貨地方 (公共交通總站除外)	不適用
2.	<b>機房及相類設施</b>	
2.1	所佔面積受相關《認可人士、註冊結構工程師及註冊岩土工程師作業備考》(《作業備考》)或規例限制的強制性設施或必要機房，例如升降機機房、電訊及廣播設備室、垃圾及物料回收房等	190.957
2.2	所佔面積不受任何《作業備考》或規例限制的強制性設施或必要機房，例如僅由消防裝置及設備佔用的房間、電錶房、電力變壓房、食水及鹹水缸等	755.325
2.3	非強制性或非必要機房，例如空調機房、送風櫃房等	128.508
<b>根據聯合作業備考第1及第2號提供的環保設施</b>		
3.	露台	325.454
4.	加闊的公用走廊及升降機大堂	160.008
5.	公用空中花園	不適用
6.	隔聲鳍	不適用
7.	翼牆、捕風器及風斗	不適用
8.	非結構預製外牆	58.956
9.	工作平台	189
10.	隔音屏障	不適用
<b>適意設施</b>		
11.	管理員宿舍、供保安人員和管理處員工使用的櫃位、辦事處、貯物室、警衛室和廁所，以及業主立案法團辦事處	不適用
12.	住戶康樂設施，包括僅供康樂設施使用的中空空間、機房、游泳池的濾水機房、有蓋人行道等	542.253
13.	有蓋園景區及遊樂場地	407.234
14.	橫向屏障/有蓋人行道及花棚	不適用

		Area (m <sup>2</sup> )
<b>Amenity Features</b>		
15.	Larger lift shaft	384.311
16.	Chimney shaft	Not applicable
17.	Other non-mandatory or non-essential plant room, such as boiler room, satellite master antenna television (SMATV) room	Not applicable
18.	Pipe duct, air duct for mandatory feature or essential plant room	355.026
19.	Pipe duct, air duct for non-mandatory or non-essential plant room	3.432
20.	Plant room, pipe duct, air duct for environmentally friendly system and feature	Not applicable
21.	Void in duplex domestic flat and house	Not applicable
22.	Sunshade and reflector	Not applicable
23.	Minor projection such as A/C box, A/C platform, window cill and projecting window	Not applicable
24.	Other projection such as A/C box and platform not covered in paragraph 3(b) and (c) of PNAP APP-19	Not applicable
<b>Other Exempted Items</b>		
25.	Refuge floor including refuge floor cum sky garden	Not applicable
26.	Covered area under large projecting/overhanging feature	Not applicable
27.	Public transport terminus	Not applicable
28.	Party structure and common staircase	Not applicable
29.	Horizontal area of staircase, lift shaft and vertical duct solely serving floor accepted as not being accountable for GFA	Not applicable
30.	Public passage	Not applicable
31.	Covered set back area	Not applicable
<b>Bonus GFA</b>		
32.	Bonus GFA	Not applicable
<b>Additional Green Features under Joint Practice Note (No. 8)</b>		
33.	Buildings adopting Modular Integrated Construction	Not applicable

Note:  
The above table is based on the requirements as stipulated in the Practice Note for Authorized Persons, Registered Structural Engineers and Registered Geotechnical Engineers ADM-2 issued by the Buildings Department. The Buildings Department may revise such requirements from time to time as appropriate.

		面積(平方米)
<b>適意設施</b>		
15.	擴大升降機槽	384.311
16.	煙囪管道	不適用
17.	其他非強制性或非必要機房，例如鍋爐房、衛星電視共用天線房	不適用
18.	強制性設施或必要機房所需的管槽及氣槽	355.026
19.	非強制性設施或非必要機房所需的管槽及氣槽	3.432
20.	環保系統及設施所需的機房、管槽及氣槽	不適用
21.	複式住宅單位及洋房的中空空間	不適用
22.	遮陽篷及反光罩	不適用
23.	小型伸出物，例如空調機箱、空調機平台、窗檻及伸出的窗台	不適用
24.	《作業備考》APP-19第3(b)及(c)段沒有涵蓋的其他伸出物，如空調機箱及空調機平台	不適用
<b>其他項目</b>		
25.	庇護層，包括庇護層兼空中花園	不適用
26.	大型伸出/外懸設施下的有蓋地方	不適用
27.	公共交通總站	不適用
28.	共用構築物及公用樓梯	不適用
29.	僅供獲接納不計入總樓面面積的樓層使用的樓梯、升降機槽及垂直管道的水平面積	不適用
30.	公眾通道	不適用
31.	有蓋的後移部分	不適用
<b>額外總樓面面積</b>		
32.	額外總樓面面積	不適用
<b>根據聯合作業備考(第8號)提供的額外環保設施</b>		
33.	採用「組裝合成」建築法的樓宇	不適用

註：  
上述表格是根據屋宇署所發出的《認可人士、註冊結構工程師及註冊岩土工程師作業備考》ADM-2規定的要求而制訂的。屋宇署會按實際需要不時更改有關要求。

# Information in Application for Concession on Gross Floor Area of Building

## 申請建築物總樓面面積寬免的資料

Environmental assessment of the building and information on the estimated energy performance or consumption for the common parts of the Development

The approved general building plans of this development are not subject to the requirements stipulated in the Practice Note for Authorized Persons, Registered Structural Engineers and Registered Geotechnical Engineers APP-151 issued by the Building Authority. Environmental assessment and information on the estimated energy performance or consumption for the common parts of this development were not required to be submitted to the Building Authority as a prerequisite for the granting of gross floor area concessions.

本發展項目有關建築物的環境評估及公用部分的預計能量表或消耗的資料

本發展項目的經批准一般建築圖則不受由建築事務監督發出的《認可人士、註冊結構工程師及註冊岩土工程師作業備考》APP-151規定規限。本發展項目的環境評估及公用部份的預計能量表現或消耗的資料無須呈交建築事務監督，以作為批予總樓面面積寬免的先決條件。

This page is left blank intentionally  
此頁保留空白

## Date of Printing of Sales Brochure

### 售樓說明書印製日期

Date of printing of this Sales Brochure: 24<sup>th</sup> October 2013

本售樓說明書印製日期：2013年10月24日

## Possible Future Change

### 日後可能出現的改變

There may be future changes to the Development and the surrounding areas.

發展項目及其周邊地區日後可能出現改變。

# Examination Record

## 檢視紀錄

Examination/Revision Date 檢視/修改日期	Revision Made (If no revision is required, please state "no revision made") 所作修改 (如無須作出修改，請註明「並無作出修改」)	
	Page Number 頁次	Revision Made 所作修改
28 <sup>th</sup> October, 2013 2013年10月28日	24, 25, 26, 27	Floor Plans of Residential Properties in the Development are updated. 更新發展項目的住宅物業的樓面平面圖。
24 <sup>th</sup> January, 2014 2014年1月24日	13	Location Plan of the Development is updated. 更新發展項目的所在位置圖。
24 <sup>th</sup> January, 2014 2014年1月24日	14	Aerial Photograph of the Development is updated. 更新發展項目的鳥瞰照片。
24 <sup>th</sup> January, 2014 2014年1月24日	18, 19, 20, 21, 23, 24, 25, 26, 27, 28	Floor Plans of Residential Properties in the Development are updated. 更新發展項目的住宅物業的樓面平面圖。
24 <sup>th</sup> January, 2014 2014年1月24日	38	Summary of Deed of Mutual Covenant is updated. 更新公契的摘要。
24 <sup>th</sup> January, 2014 2014年1月24日	39	Summary of Land Grant is updated. 更新批地文件的摘要。
24 <sup>th</sup> January, 2014 2014年1月24日	48, 49, 57, 58	Fittings, Finishes and Appliances are updated. 更新裝置、裝修物料及設備。
24 <sup>th</sup> January, 2014 2014年1月24日	78, 79, 80, 81, 82, 83, 84	Fittings, Finishes and Appliances are updated. 更新裝置、裝修物料及設備。
23 <sup>rd</sup> April, 2014 2014年4月23日	13	Location Plan of the Development is updated. 更新發展項目的所在位置圖。
23 <sup>rd</sup> April, 2014 2014年4月23日	14	Aerial Photograph of the Development is updated. 更新發展項目的鳥瞰照片。
23 <sup>rd</sup> April, 2014 2014年4月23日	25, 26, 29	Floor Plans of Residential Properties in the Development are updated. 更新發展項目的住宅物業的樓面平面圖。
23 <sup>rd</sup> April, 2014 2014年4月23日	72, 73, 74, 75, 76, 77, 78, 79, 80, 81, 82, 83, 85	Fittings, Finishes and Appliances are updated. 更新裝置、裝修物料及設備。



# Examination Record

## 檢視紀錄

Examination/Revision Date 檢視/修改日期	Revision Made (If no revision is required, please state "no revision made") 所作修改 (如無須作出修改，請註明「並無作出修改」)	
	Page Number 頁次	Revision Made 所作修改
23 <sup>rd</sup> July, 2014 2014年7月23日	2, 3, 4, 5	Notes to Purchasers of First-hand Residential Properties are updated. 更新一手住宅物業買家須知。
23 <sup>rd</sup> July, 2014 2014年7月23日	13	Location Plan of the Development is updated. 更新發展項目的所在位置圖。
23 <sup>rd</sup> July, 2014 2014年7月23日	14	Aerial Photograph of the Development is updated. 更新發展項目的鳥瞰照片。
23 <sup>rd</sup> July, 2014 2014年7月23日	24, 25	Floor Plans of Residential Properties in the Development are updated. 更新發展項目的住宅物業的樓面平面圖。
23 <sup>rd</sup> July, 2014 2014年7月23日	50, 58	Fittings, Finishes and Appliances are updated. 更新裝置、裝修物料及設備。
23 <sup>rd</sup> October, 2014 2014年10月23日	13	Location Plan of the Development is updated. 更新發展項目的所在位置圖。
23 <sup>rd</sup> October, 2014 2014年10月23日	14	Aerial Photographs of the Development is updated. 更新發展項目的鳥瞰照片。
23 <sup>rd</sup> October, 2014 2014年10月23日	18, 25, 28	Floor Plans of Residential Properties in the Development are updated. 更新發展項目的住宅物業的樓面平面圖。
23 <sup>rd</sup> October, 2014 2014年10月23日	72, 81, 84	Fittings, Finishes and Appliances are updated. 更新裝置、裝修物料及設備。
23 <sup>rd</sup> January, 2015 2015年1月23日	13	Location Plan of the Development is updated. 更新發展項目的所在位置圖。
23 <sup>rd</sup> January, 2015 2015年1月23日	14, 14A, 14B	Aerial Photographs of the Development are updated. 更新發展項目的鳥瞰照片。
23 <sup>rd</sup> April, 2015 2015年4月23日	13	Location Plan of the Development is updated. 更新發展項目的所在位置圖。
23 <sup>rd</sup> April, 2015 2015年4月23日	14	Aerial Photographs of the Development are updated. 更新發展項目的鳥瞰照片。

Examination/Revision Date 檢視/修改日期	Revision Made (If no revision is required, please state "no revision made") 所作修改 (如無須作出修改，請註明「並無作出修改」)	
	Page Number 頁次	Revision Made 所作修改
15 <sup>th</sup> June, 2015 2015年6月15日	13	Location Plan of the Development is updated. 更新發展項目的所在位置圖。
15 <sup>th</sup> June, 2015 2015年6月15日	56, 64, 68, 83	Fittings, Finishes and Appliances are updated. 更新裝置、裝修物料及設備。
2 <sup>nd</sup> July, 2015 2015年7月2日	82	Fittings, Finishes and Appliances is updated. 更新裝置、裝修物料及設備。
10 <sup>th</sup> September, 2015 2015年9月10日	13	Location Plan of the Development is updated. 更新發展項目的所在位置圖。
10 <sup>th</sup> September, 2015 2015年9月10日	14	Aerial Photographs of the Development are updated. 更新發展項目的鳥瞰照片。
10 <sup>th</sup> September, 2015 2015年9月10日	26, 27, 28	Floor Plans of Residential Properties in the Development are updated. 更新發展項目的住宅物業的樓面平面圖。
10 <sup>th</sup> September, 2015 2015年9月10日	82, 83, 84	Fittings, Finishes and Appliances are updated. 更新裝置、裝修物料及設備。
10 <sup>th</sup> December, 2015 2015年12月10日	13	Location Plan of the Development is updated. 更新發展項目的所在位置圖。
10 <sup>th</sup> December, 2015 2015年12月10日	14	Aerial Photographs of the Development are updated. 更新發展項目的鳥瞰照片。
10 <sup>th</sup> December, 2015 2015年12月10日	44, 45	Elevation Plans are updated. 更新立面圖。
10 <sup>th</sup> December, 2015 2015年12月10日	51, 52, 53, 59, 60, 61	Fittings, Finishes and Appliances are updated. 更新裝置、裝修物料及設備。
10 <sup>th</sup> December, 2015 2015年12月10日	80, 81, 82, 83	Fittings, Finishes and Appliances are updated. 更新裝置、裝修物料及設備。
21 <sup>st</sup> December, 2015 2015年12月21日	80, 81	Fittings, Finishes and Appliances are updated. 更新裝置、裝修物料及設備。

# Examination Record

## 檢視紀錄

Examination/Revision Date 檢視/修改日期	Revision Made (If no revision is required, please state "no revision made") 所作修改 (如無須作出修改，請註明「並無作出修改」)	
	Page Number 頁次	Revision Made 所作修改
18 <sup>th</sup> March, 2016 2016年3月18日	6	Information on the Development is updated. 更新發展項目的資料。
18 <sup>th</sup> March, 2016 2016年3月18日	13	Location Plan of the Development is updated. 更新發展項目的所在位置圖。
18 <sup>th</sup> March, 2016 2016年3月18日	15	Outline Zoning Plan Relating to the Development is updated. 更新關乎發展項目的分區計劃大綱圖。
18 <sup>th</sup> March, 2016 2016年3月18日	17	Layout Plan of the Development is updated. 更新發展項目的布局圖。
15 <sup>th</sup> June, 2016 2016年6月15日	13	Location Plan of the Development is updated. 更新發展項目的所在位置圖。
15 <sup>th</sup> June, 2016 2016年6月15日	14	Aerial Photograph of the Development is updated. 更新發展項目的鳥瞰照片。
14 <sup>th</sup> September, 2016 2016年9月14日	10,11	Information on Design of the Development are updated. 更新發展項目的設計的資料。
14 <sup>th</sup> September, 2016 2016年9月14日	12	Information on Property Management is updated. 更新物業管理的資料。
14 <sup>th</sup> September, 2016 2016年9月14日	13	Location Plan of the Development is updated. 更新發展項目的所在位置圖。
14 <sup>th</sup> September, 2016 2016年9月14日	35, 37	Summary of Deed of Mutual Covenant are updated. 更新公契的摘要。
14 <sup>th</sup> September, 2016 2016年9月14日	47	Inspection of Plans and Deed of Mutual Covenant is updated. 更新閱覽圖則及公契。
13 <sup>th</sup> December, 2016 2016年12月13日		No revision made. 並無作出修改。

Examination/Revision Date 檢視/修改日期	Revision Made (If no revision is required, please state "no revision made") 所作修改 (如無須作出修改，請註明「並無作出修改」)	
	Page Number 頁次	Revision Made 所作修改
10 <sup>th</sup> March, 2017 2017年3月10日	13	Location Plan of the Development is updated. 更新發展項目的所在位置圖。
9 <sup>th</sup> June, 2017 2017年6月9日	13	Location Plan of the Development is updated. 更新發展項目的所在位置圖。
9 <sup>th</sup> June, 2017 2017年6月9日	14	Aerial Photograph of the Development is updated. 更新發展項目的鳥瞰照片。
8 <sup>th</sup> September, 2017 2017年9月8日	2, 3, 4, 5, 5a, 5b	Notes to Purchasers of First-hand Residential Properties are updated. 更新一手住宅物業買家須知。
8 <sup>th</sup> September, 2017 2017年9月8日	7	Information on Vendor and Others Involved in the Development is updated. 更新賣方及有參與發展項目的其他人的資料。
7 <sup>th</sup> December, 2017 2017年12月7日	13	Location Plan of the Development is updated. 更新發展項目的所在位置圖。
6 <sup>th</sup> March, 2018 2018年3月6日	13	Location Plan of the Development is updated. 更新發展項目的所在位置圖。
6 <sup>th</sup> March, 2018 2018年3月6日	14	Aerial Photograph of the Development is updated. 更新發展項目的鳥瞰照片。
5 <sup>th</sup> June, 2018 2018年6月5日	13	Location Plan of the Development is updated. 更新發展項目的所在位置圖。
5 <sup>th</sup> June, 2018 2018年6月5日	14	Aerial Photograph of the Development is updated. 更新發展項目的鳥瞰照片。
4 <sup>th</sup> September, 2018 2018年9月4日	7	Information on Vendor and Others Involved in the Development is updated. 更新賣方及有參與發展項目的其他人的資料。
4 <sup>th</sup> September, 2018 2018年9月4日	13	Location Plan of the Development is updated. 更新發展項目的所在位置圖。
4 <sup>th</sup> September, 2018 2018年9月4日	49, 50, 58	Fittings, Finishes and Appliances are updated. 更新裝置、裝修物料及設備。

# Examination Record

## 檢視紀錄

Examination/Revision Date 檢視/修改日期	Revision Made (If no revision is required, please state "no revision made") 所作修改 (如無須作出修改，請註明「並無作出修改」)	
	Page Number 頁次	Revision Made 所作修改
3 <sup>rd</sup> December, 2018 2018年12月3日	13	Location Plan of the Development is updated. 更新發展項目的所在位置圖。
1 <sup>st</sup> March, 2019 2019年3月1日	13	Location Plan of the Development is updated. 更新發展項目的所在位置圖。
1 <sup>st</sup> March, 2019 2019年3月1日	14	Aerial Photograph of the Development is updated. 更新發展項目的鳥瞰照片。
31 <sup>st</sup> May, 2019 2019年5月31日	13	Location Plan of the Development is updated. 更新發展項目的所在位置圖。
30 <sup>th</sup> August, 2019 2019年8月30日	13	Location Plan of the Development is updated. 更新發展項目的所在位置圖。
29 <sup>th</sup> November, 2019 2019年11月29日	13	Location Plan of the Development is updated. 更新發展項目的所在位置圖。
28 <sup>th</sup> February, 2020 2020年2月28日		No revision made. 並無作出修改。
27 <sup>th</sup> May, 2020 2020年5月27日	13	Location Plan of the Development is updated. 更新發展項目的所在位置圖。
26 <sup>th</sup> August, 2020 2020年8月26日	13	Location Plan of the Development is updated. 更新發展項目的所在位置圖。
26 <sup>th</sup> August, 2020 2020年8月26日	14, 14A, 14B, 14C	Aerial Photograph of the Development is updated. 更新發展項目的鳥瞰照片。
25 <sup>th</sup> November, 2020 2020年11月25日	13	Location Plan of the Development is updated. 更新發展項目的所在位置圖。
25 <sup>th</sup> November, 2020 2020年11月25日	14, 14A	Aerial Photographs of the Development are updated. 更新發展項目的鳥瞰照片。
25 <sup>th</sup> November, 2020 2020年11月25日	14B, 14C	14B, 14C are deleted and replaced with a blank page. 刪除第14B, 14C頁並換上空頁。

Examination/Revision Date 檢視/修改日期	Revision Made (If no revision is required, please state "no revision made") 所作修改 (如無須作出修改，請註明「並無作出修改」)	
	Page Number 頁次	Revision Made 所作修改
24 <sup>th</sup> February, 2021 2021年2月24日	13	Location Plan of the Development is updated. 更新發展項目的所在位置圖。
24 <sup>th</sup> February, 2021 2021年2月24日	14	Aerial Photograph of the Development is updated. 更新發展項目的鳥瞰照片。
24 <sup>th</sup> February, 2021 2021年2月24日	14A	14A is deleted and replaced with a blank page. 刪除第14A頁並換上空頁。
21 <sup>st</sup> May, 2021 2021年5月21日	15	Outline Zoning Plan relating to the Development is updated. 更新關於發展項目的分區計劃大綱圖。
20 <sup>th</sup> August, 2021 2021年8月20日	2, 3, 4, 5, 5a, 5b	Notes to Purchasers of First-hand Residential Properties are updated. 更新一手住宅物業買家須知。
20 <sup>th</sup> August, 2021 2021年8月20日	13	Location Plan of the Development is updated. 更新發展項目的所在位置圖。
20 <sup>th</sup> August, 2021 2021年8月20日	14, 14A	Aerial Photographs of the Development are updated. 更新發展項目的鳥瞰照片。
19 <sup>th</sup> November, 2021 2021年11月19日	13	Location Plan of the Development is updated. 更新發展項目的所在位置圖。
17 <sup>th</sup> February, 2022 2022年2月17日	13	Location Plan of the Development is updated. 更新發展項目的所在位置圖。
16 <sup>th</sup> May, 2022 2022年5月16日	13	Location Plan of the Development is updated. 更新發展項目的所在位置圖。
16 <sup>th</sup> May, 2022 2022年5月16日	15	Outline Zoning Plan relating to the Development is updated. 更新關於發展項目的分區計劃大綱圖。
15 <sup>th</sup> August, 2022 2022年8月15日	14B	Aerial Photograph of the Development is added. 新增發展項目的鳥瞰照片。

# Examination Record

## 檢視紀錄

Examination/Revision Date 檢視/修改日期	Revision Made (If no revision is required, please state "no revision made") 所作修改 (如無須作出修改，請註明「並無作出修改」)	
	Page Number 頁次	Revision Made 所作修改
14 <sup>th</sup> November, 2022 2022年11月14日	13	Location Plan of the Development is updated. 更新發展項目的所在位置圖。
14 <sup>th</sup> November, 2022 2022年11月14日	14	Aerial Photograph of the Development is updated. 更新發展項目的鳥瞰照片。
14 <sup>th</sup> November, 2022 2022年11月14日	14A, 14B	14A, 14B are deleted and replaced with a blank page. 刪除第14A, 14B頁並換上空頁。
13 <sup>th</sup> February, 2023 2023年2月13日	13	Location Plan of the Development is updated. 更新發展項目的所在位置圖。
13 <sup>th</sup> February, 2023 2023年2月13日	15	Outline Zoning Plan relating to the Development is updated. 更新關乎發展項目的分區計劃大綱圖。
11 <sup>th</sup> May, 2023 2023年5月11日	5b	Notes to Purchasers of First-hand Residential Properties is updated. 更新一手住宅物業買家須知。
11 <sup>th</sup> May, 2023 2023年5月11日	13	Location Plan of the Development is updated. 更新發展項目的所在位置圖。
11 <sup>th</sup> May, 2023 2023年5月11日	14A	Aerial Photograph of the Development is added. 新增發展項目的鳥瞰照片。
10 <sup>th</sup> August, 2023 2023年8月10日	13	Location Plan of the Development is updated. 更新發展項目的所在位置圖。
10 <sup>th</sup> August, 2023 2023年8月10日	14B, 14C	Aerial Photograph of the Development are added. 新增發展項目的鳥瞰照片。
8 <sup>th</sup> November, 2023 2023年11月8日	13	Location Plan of the Development is updated. 更新發展項目的所在位置圖。
8 <sup>th</sup> November, 2023 2023年11月8日	15	Outline Zoning Plan relating to the Development is updated. 更新關乎發展項目的分區計劃大綱圖。

Examination/Revision Date 檢視/修改日期	Revision Made (If no revision is required, please state "no revision made") 所作修改 (如無須作出修改，請註明「並無作出修改」)	
	Page Number 頁次	Revision Made 所作修改
8 <sup>th</sup> November, 2023 2023年11月8日	90, 91	Information in Application for Concession on Gross Floor Area of Building are updated. 更新申請建築物總樓面面積寬免的資料。
8 <sup>th</sup> November, 2023 2023年11月8日	91a	Information in Application for Concession on Gross Floor Area of Building is added. 新增申請建築物總樓面面積寬免的資料。
7 <sup>th</sup> February, 2024 2024年2月7日	13	Location Plan of the Development is updated. 更新發展項目的所在位置圖。
7 <sup>th</sup> February, 2024 2024年2月7日	14A, 14B	Aerial Photograph of the Development are added. 新增發展項目的鳥瞰照片。
7 <sup>th</sup> February, 2024 2024年2月7日	14C	Aerial Photograph of the Development is deleted and replaced with a blank page. 刪除發展項目的鳥瞰照片並換上空頁。
6 <sup>th</sup> May, 2024 2024年5月6日	13	Location Plan of the Development is updated. 更新發展項目的所在位置圖。
6 <sup>th</sup> May, 2024 2024年5月6日	14, 14A, 14B	Aerial Photographs of the Development are updated. 更新發展項目的鳥瞰照片。
1 <sup>st</sup> August, 2024 2024年8月1日	13	Location Plan of the Development is updated. 更新發展項目的所在位置圖。
1 <sup>st</sup> August, 2024 2024年8月1日	14, 14A, 14B	Aerial Photographs of the Development are updated. 更新發展項目的鳥瞰照片。
1 <sup>st</sup> August, 2024 2024年8月1日	15, 16	Outline Zoning Plans relating to the Development are updated. 更新關乎發展項目的分區計劃大綱圖。
30 <sup>th</sup> October, 2024 2024年10月30日	13	Location Plan of the Development is updated. 更新發展項目的所在位置圖。
30 <sup>th</sup> October, 2024 2024年10月30日	14	Aerial Photograph of the Development is updated. 更新發展項目的鳥瞰照片。
30 <sup>th</sup> October, 2024 2024年10月30日	14A, 14B	Aerial Photographs of the Development are deleted and replaced with a blank page. 刪除發展項目的鳥瞰照片並換上空頁。



# Examination Record

## 檢視紀錄

Examination/Revision Date 檢視/修改日期	Revision Made (If no revision is required, please state "no revision made") 所作修改 (如無須作出修改，請註明「並無作出修改」)	
	Page Number 頁次	Revision Made 所作修改
27 <sup>th</sup> January, 2025 2025年1月27日	7	Information on Vendor and Others Involved in the Development is updated. 更新賣方及有參與發展項目的其他人的資料。
27 <sup>th</sup> January, 2025 2025年1月27日	13	Location Plan of the Development is updated. 更新發展項目的所在位置圖。
27 <sup>th</sup> January, 2025 2025年1月27日	14A, 14B	Aerial Photographs of the Development are added. 新增發展項目的鳥瞰照片。

